

**Clara Maass Employees
Honored For Service**
See Pictures on Page Three

**Pioneers Sponsor Party
At Geriatrics Center**
See Pictures on Page Five

**Italian-American Group
Elects New Officers**
See Pictures on Page Seven

The Belleville Times

Vol. 76, No. 4

Second Class Postage Paid
At Newark, N.J. (USPS 049-220)

Thursday, December 27, 1984

Published
Every Thursday

35¢



Graffiti Problem — To combat the graffiti problem in the township, the Board of Commissioners unanimously approved a measure to amend the township's disorderly conduct ordinance last week by including a section to prohibit defacing public or private property. Most incidents, like this one at School 5, consists of writing or markings on the exteriors of buildings.

Teacher Suspended; Charged with Abuse

By Linda Telesco

A Belleville teacher and administrator has been suspended from work on charges that he sexually abused a student who recently admitted guilt in a satanic sex cult.

The accused teacher and director of child study in Belleville, was suspended by the Belleville Board of Education pending a hearing before an administrative law judge.

He was charged last week by John Sileo, 23, of Nutley with sexually abusing Sileo 10 years ago when the Nutley man was a student in the Belleville school system.

Sileo's charges emerged last week during a plea bargain hearing in Newark Superior court. Sileo admitted participating in a satanic cult in Nutley that involved sexual abuse of young boys.

Sileo, who is now in an Essex county jail blamed his involvement in the cult on the effect of the teacher's assault upon him

when he was a youth.

The charges have been denied by the teacher's attorney Sanford Oxfeld.

School Board attorney Lawrence Schwartz said the teacher has been in the Belleville school system for 15 years and this is the first time charges have ever been brought against him.

According to Schwartz, when Sileo's claim came to the attention of the Essex County Prosecutor, criminal charges could not be filed against the teacher because the statute of limitations had expired.

"The Board of Education heard these charges and decided to suspend the accused teacher pending a hearing before the state commissioner (of education)," said Schwartz.

Schwartz noted that according to law, the teacher would not be paid for the first 120 days of his suspension. "The law says, however, a suspended teacher

(Please see "Board" on page 15)

Student Infractions Cited

Middle School Administrators Present New Conduct and Discipline Policy

A formal conduct and discipline policy for the Middle School was presented to the School Board, with success, at last week's meeting.

Vice principal Frank Catrombone explained the eight-page document that deals with various student infractions from cutting class to full scale vandalism or drug abuse and the proposed methods of penalty and reform established for them.

"The purpose of the policy is not to duplicate the high school's discipline policy," said Catrombone, "but to be consistent with it."

Both Catrombone and Middle School Principal Mario DiMaggio, who was on hand for the presentation, agreed that their faculty experiences little in the way of serious or even minor disciplinary problems.

"We're presenting a guideline for acceptable behavior," said the vice principal, who added that copies of the policy will be sent home to parents with each student.

Devised by a committee of middle school administrators, teachers, counselors, parents and

students, the policy sets down rules of behavior in the classroom, corridors, cafeteria, and during bus rides or fire drills.

The rules consist of conduct such as "homework assignments must be neat, complete and handed in on time."

The new guidelines also include instruction for parents of middle school students. For instance, if a student will be absent, parents are expected to call the school to notify officials of the absence.

Other irregularities and infractions discussed are truancy, tardiness, unauthorized vacations, and excessive absences.

In a special attachment, the policy lists various violations ranging in seriousness from cutting a class period to vandalism or arson, the procedure for dealing with the infraction as well as the disciplinary response.

For instance, if a student is caught smoking on school premises, the procedure for dealing with the act includes first notifying the parents, then arranging for the student to meet with the school nurse to discuss the health effects of smoking, and

finally, the possibility of calling the town fire marshal to deal with the violation.

The penalties range from detention to a short essay on the physical effects of smoking. For the second offense, a student may be suspended for one day and subsequent offenses carry a penalty of suspension for two or three days.

Trustee Gabe Nazzola took pains to explain that having such a policy "might imply incidents so numerous as to warrant a weighty response such as this."

The vice principal assured him that the policy was developed in response to county recommendations that each school district have "a standardized procedure in place" for various disorderly problems.

"When children and their parents are aware of guidelines, behavior improves," said DiMaggio.

More specifically, the middle school administrators said their facility has a low number of disciplinary incidents.

On the matter of vandalism, DiMaggio said "fewer than 10 windows had been broken in the past year and relatively little graffiti troubled the building."

He also reported that in the past five years, the middle school experienced only one incident of suspected drug abuse. "And that was only suspected. There were no actual cases," he said.

The major criticism came from Trustee John DiStasi who favors instituting an "in-house" suspension program.

"I question whether a suspension is the proper response especially in the areas of absence or truancy," said DiStasi.

He observed that a suspension might allow the student to "stay home, sleep late and be rewarded rather than punished."

The trustee recommended that the student serve his suspension in school. "Make him get up, get dressed and come here," DiStasi

said. "You guys find something for him to do, even if he just sits in the building all day," the trustee told the administrators.

While most agreed the suggestion had merit, DiMaggio noted that in-house suspension was a luxury. "We just don't have people to spare to maintain a watch all day," he said.

Board of Ed President In Accident

School Board President Grace Purdue was released Thursday from Clara Maass Medical Center where she was admitted Monday following a car accident.

"I'm okay," said Purdue in a telephone call to her home Thursday night. "A little sore and not feeling so great, but it could have been a lot worse."

Purdue, who suffered a separated vertebrae in her neck, said the accident occurred Monday morning in Newark.

The school official said she was traveling west on Verona Avenue and approached the intersection of Mt. Prospect Avenue where her vehicle was struck by another car.

"My car spun around and hit another car," she reported. "As I straightened out, the car went into a gas station on the corner and hit a parked car."

Purdue said she recalls few details because she "blacked out" when her car was hit.

"I think the car is a mess, but that's not the worst thing that could have happened," she said.

Wearing a neck brace, the school official said she requested release from the hospital early in order to prepare for the holidays.

In her absence, School Board Vice President Anthony D'Agostino chaired last Monday's meeting.

Truck Accident Injures Traffic Signal Workers

Two employees of the township's Traffic Signal Department were injured last week when a tractor trailer struck their bucket truck while they were working on a traffic light at the intersection of Joramona and Main streets.

According to Deputy Chief Frank Haight, the accident, which occurred Monday afternoon, Dec. 11, was caused when the top of a tractor trailer struck the bucket. At the time of the accident the trailer was heading south on Main Street. Karl Decker, who was working in the bucket, was

knocked around jarring the traffic light from his hands. The traffic light fell striking Decker's assistant, Donald Monica in the head.

Both men were taken to Clara Maass Medical Center for treatment. Decker, who received minor injuries, was released a few days after. Monica, however, suffered serious injuries to the head and body and was reported in fair condition on Friday.

According to Haight, no charges were filed against the driver, Joseph Glick of Consolidated Freight Way, Newark.

Township People Voice New Year's Resolutions



Grace Purdue
School Board President
"I haven't thought that far ahead. I wish health and happiness to everyone in town. And I wish to see a budget and a bond issue passed. Is that being selfish?"



Mayor Michael Marotti
"I don't believe in resolutions. They always get broken. But I really wish everybody a healthy and happy New Year. That's the best resolution."



Alison Bogert
High School Secretary
"My resolution is the same one every year. I'm going to try to lose 10 pounds."



Austin MacArthur
School 3 Principal
"My resolution is to attempt to be the best principal there is."



Joanne Gerst
Sycamore Drive
"This is one I might keep. I hope to be a better Christian and a better person."

(Please see "Township" on page 19)

Belleville's Past: Washington Avenue

During the winter of 1869, an act was passed providing for an extended system of Telford roads or boulevards, varying in width from 60 to 100 feet starting from the City of Newark, leading to and passing around the surrounding



Washington Street (north of William Street)

towns. One of this system of roads called Washington Avenue, commencing at the northerly termination of Belleville Avenue,

Newark, extending northerly passing through Belleville and Franklin to the Passaic County line, is 80 feet wide and is about 6 miles in length. Location is generally straight, with such layout of Belleville, and to make the most beautiful sites along the line accessible by means of this boulevard. It passes through the village from 1000 to 1200 feet west of the river, on an elevation of 50 feet above the same.

From its eastern border the ground is descending from its western either level or gradually ascending along its line through and above Belleville. There are most beautiful villa sites from which most extended views in a southerly and northerly direction are afforded, stretching out for miles. The scenery is unsurpassed for beauty. It is yet thinly settled, and affords opportunity to persons desiring to locate in the suburbs of New York or Newark worthy of their examination and consideration and a day spent by such in this neighborhood would not be without its advantages to them. The road is telfordized, in good condition, furnishes a fine drive; from this elevation the air is exhilarating and the health of the locality compares favorably with any of the surrounding towns.

— Belleville Historical Society

(From the history of Essex and Hudson Counties 1884 — by Theodore Sandford)

Dr. Castellano to Head Dental Health Month

While Kermit the Frog has been named head Tooth Sleuth for Children's Dental Health Month, Dr. Vincent J. Castellano, representing Belleville, has been appointed chairman of the county-wide program sponsored by the Essex County Dental Society.

"Be a Tooth SLEUTH — Start Learning to End Unhealthy Tooth Habits" is the theme of the national dental program that will swing into action this coming February. Kermit, the irrepressible Muppet, will provide a lovable character in whose footsteps kids can follow to help them learn good dental hygiene practices.

For 37 years, the Essex County Dental Society has been actively promoting Children's Dental Health Month. Dentists volunteer to address school classes on the ABC's of brushing, flossing and fluorides, as well as the dangers of plaque buildup.

"Schools seeking dentists for presentations in February should contact their area's Children's Dental Health Month chairperson," said Dr. Castellano.

Citing the profession's pride in reducing the number of cavities while increasing tooth retention, Dr. Castellano called programs like Children's Dental Health Month "indispensable" to that success. He urged that parents as well as their children "learn to spot clues that indicate early tooth or gum disease."

Dr. Castellano maintains a general practice in Bloomfield. A graduate of Upsala College, East Orange, he was awarded a D.M.D. degree from the University of Medicine and Dentistry of New Jersey. He was the recipient of the Upsala College award for Academic Achievement, the American Academy of Periodontology award and the New Jersey Society of Dentistry for Children award.

A member of the Essex County Dental Society, the New Jersey and American Dental Associations, Dr. Castellano also participates in the Fauchard Dental Society and is a Bloomfield Chamber of Commerce member.

TO ALL OUR FRIENDS!

We wish a beautiful holiday season and a New Year of Peace and Happiness

Ann DeCarlo and Associates

Families Should Apply For Energy Assistance

New Jersey's low income families and individuals are urged to apply for Home Energy Assistance, a program which provides funds to assist eligible households to meet the cost of heating during the winter months.

The Department of Human Services expects to receive \$83 million this year from the federal government for the Home Energy Assistance program and anticipates serving approximately 215,000 families. The average benefit is \$315 per household. Individual benefits will vary depending on the household's gross monthly income, size, geographic location and the type of fuel used. Households which have their heating costs included in their rent are also eligible to apply.

Under the federal guidelines, a single person must have a gross monthly income at or below \$519; \$700 for a family of two; \$881 for a family of three; \$1,062 for a family of four; \$1,243 for a family of five; and \$1,424 for a family of six; for each additional member, add \$181.

Applications for the program are available at the local county welfare agency. Special arrange-

ments have been made to allow senior citizens and the disabled to receive and return the applications by mail. For applications and additional information about the program please call 1-800-257-6249 or the Belleville Welfare Department at 450-3380.

SEASONS GREETINGS

from

PIZZA BOX

500 Union Ave. Belleville

759-9628 751-3577

We Deliver To Belleville & Nutley in Portable Ovens

This Coupon Good For **75¢ OFF Any Pie**

OPEN 7 NIGHTS A WEEK

Thur. Fri. Sat. Sun. Mon. Specials
December 27 thru December 31

1 lb. HOME COOKED CHOICE ROAST BEEF .. \$4.59

1/2 lb. HORMEL DiLUSSO GENOA SALAMI \$2.33

1/2 lb. KRAKUS IMPORTED POLISH HAM \$1.81

1/2 lb. FINLANDIA IMPORTED SWISS \$1.83

Have Lunch With Us...
Free Coffee With Lunch 11:30a.m.-2:30p.m.
Open 7 days a week till 10:00 P.M.

Towne 751-3935

DELICATESSEN & CATERERS

650 JORALEMON ST.
Cor. Franklin Ave., Belleville

Member of Belleville Chamber of Commerce

Pharmacy Footnotes

Vincent Cozzarelli Reg. Ph.

ALCOHOL IN DRUGS

A child's first sip of alcohol may come from an unexpected source, the family medicine chest. Many teething preparations, cough syrups, decongestants and pain and fever reducers contain from one-tenth to 68 percent alcohol. The American Academy of Pediatrics indicates that anything over 5 percent may be harmful. If kids take an alcohol-containing medicine along with another drug, such as taking certain antibiotics along with antibacterial drugs, negative side effects like nausea and flushing could develop. This does not mean that kids should not take any medications that contain alcohol. Consult your physician if the medication has more than 5% alcohol or, if your child is under age six. Carefully read the labels on all medications and choose one with the least amount of alcohol.

Let us handle your prescription medications, for children and adults, at ROS-SMORE PHARMACY, 338 Washington Ave. 759-1968, 759-1956. We have a complete prescription department and provide free delivery. A box of Russell Sever candy will add to your New Year's festivities. Open 9am-10pm daily, 9am-9pm Sundays. May you and your families have a very healthy, happy New Year.

HANDY HINT:
Alcohol in a child's medication could possibly counteract another medication.

ON THIS WONDROUS HOLIDAY

Season's Greetings

From

First DeWitt Savings AND LOAN ASSOCIATION

BELLEVILLE • BLOOMFIELD • CEDAR GROVE • HOPATCONG

MAIN OFFICE: 463 Washington Ave. • Belleville • BLOOMFIELD CENTER OFFICE: 667 Bloomfield Ave. • Bloomfield
BROOKDALE OFFICE: Broad St. & Watchung Ave. • Bloomfield • CEDAR GROVE BRANCH: 532 Pompton Ave. • Cedar Grove
FOREST HILL OFFICE: 60 Belleville Ave. • Bloomfield • HOPATCONG OFFICE: Sharp Ave. & Hopatcong Rd.
WATTSING OFFICE: 20 Wattsing Ave. • Bloomfield

751-2800

IN HOPATCONG CALL 398-0900

Trustees' Seminar Offered at Maass

Clara Maass Medical Center recently held a "Trustee Seminar" designed to give the Clara Maass board members an overall orientation of key operations within the Medical Center. Departments which were highlighted included Human Resources, Materials Management, Nursing Services, Pharmacy and Radiology.

"This Clara Maass Medical Center Trustee Education Conference is not only to benefit our trustees but also the physicians, administration and all those in leadership positions at the hospital," said Robert S. Curtis, president of Clara Maass, in his opening remarks. "The better informed we all are about each other's function, the better we will be able to communicate over issues common to us all."

Henry C. Pfaff, chairman of the Board of Trustees, in his opening remarks, stressed the changing role and importance of trustees in the hospital.

Brief presentations on topics of timely importance were also part of the program. Dr. William

Greifinger, medical director, addressed current changes in quality assurance especially with regard to professional review organizations and their anticipated impact on the hospital. Leslie D. Hirsch, administrative assistant, presented an overview of long range planning and access to health care.

The afternoon concluded with a tour of selected hospital facilities with an emphasis on newly renovated areas and new equipment.

"Our intent at this conference was to provide our trustees with key knowledge about current issues facing our hospital as well as practical knowledge of specific departments," said Curtis. "Such programs will enhance our ability to make decisions about the hospital now and in the future."

Healey, Mitchell In Drawing

Belleville residents Patricia Healey and Lisa Mitchell are two of 200 finalists for the grand prize drawing of New Jersey Lottery's "Go for the Gold" instant game which will be held at Caesar's Hotel and Casino in Atlantic City, Thursday, Jan. 3.

In addition to the grand prize of \$1 million (\$50,000 a year for 20 years), Director Hazel Frank Gluck said the finalists will compete for an additional \$225,000 in smaller prizes. These prizes include one second prize of \$50,000 in cash, eight third prizes of \$10,000 each and a consolation cash prize of \$500 each to the remaining 190 finalists.



Robert S. Curtis

Clara Maass Employees Are Honored



15-Year Service Award — Cleofas Olac of Belleville received a 15-year award for her service as an employee of Clara Maass Medical Center. Employees with five or more years of service were recently honored by the Clara Maass Board of Trustees at the Atrium West, West Orange.



Employee Service Awards — Clara Maass Medical Center of Belleville, and the Clara Maass Board of Trustees, recently honored those employees with five or more years of service at the Atrium West in West Orange. Pictured above are Belleville residents who received 5 year awards. From left to right are: Eugenio Recio, Corina Shultz, Arlene Manzo, Lorna Foronda, Julita Ching, Elizabeth Donofrio, Mary Kutz, Cynthia DeRosa, Betty Lopez, Norma Atienza, Jocelyn Feeks, Lydita Rapcan, and Eliseo Agustin.

Package Center Named Western Union Agent

The Post and Package Center, Newark, a division of H & R Block, has been designated as an official agent of Western Union.

The announcement was made by Bert Tobia, Block district manager, 345 Clifton Ave., Clifton.

Services now offered include mailgrams for next-day postal deliveries, telegrams for either telephone or messenger delivery and transfers of money both within the country and internationally.

The service will be useful for

taxpayers who wish funds to reach a destination as soon as possible. With Western Union, cash can be picked up and delivered to 9,000 locations throughout the country.

The center is located at 1188 Raymond Boulevard, Newark. In addition to shipping, the center also offers such services as mailbox rental, 24-hour telephone answering, photocopying and secretarial duties. Call 623-3262.

The H & R Block office in Nutley is located at 155 Franklin Ave., Nutley.

Two from Belleville Named in 'Who's Who'

Belleville residents, Sandra Murachchioni, and George McDonough have been named in the 1985 edition of "Who's Who Among Students in American Universities and Colleges." They are among 25 students from Bloomfield College who have been selected as national outstanding leaders.

Campus nominating committees and editors of the annual directory have included the names of these students based on their academic achievement, service to the community, leadership in extracurricular activities and potential for continued success. They join an elite group of students selected from more than 1,500 institutions of higher learning in all 50 states, the District of Columbia and several foreign nations. Outstanding students have been honored in the annual directory since it was first published in 1934.

Bloomfield College is an independent, coeducational institution offering day and evening programs leading to bachelor of arts and bachelor of science

degrees in selected liberal arts, as well as career-oriented degree programs.

Chicken Holiday

WE USE ONLY FRESH GRADE 'A'

PERDU CHICKEN

RIBS • SEAFOOD

SERVED DAILY

AND MUCH MORE!

WE DELIVER

5-9 PM

SEVEN

DAYS

A WEEK

CHICKEN HOLIDAY PARTY PLANS

SPECIAL PLANS MADE TO ORDER

368 MAIN STREET (GRAND UNION SHOP CENTER)

BELLEVILLE • 759-4435

CALL AHEAD FOR SPEEDY PICKUP

STORE HOURS 11 AM TO 10 PM - 7 DAYS A WEEK

DINNERS AND SNACKS ALSO AVAILABLE

The Choice of the People

OPEN NEW YEAR'S DAY

7 Days
24 Hours
Delicious
Salad Bar!

Italian
Specialties!
Steaks & Chops

All baking done on premises • Homemade pastries
Children's Menu Available
Special Breakfast Menu 8:11 a.m.
Daily Businessman's Lunch 11 a.m.-3 p.m. Seated Bar Open 11 a.m.-10 p.m.
ALA CARTE and COMPLETE DINNER MENU

We're Always Open

WILLIE'S

DINER-RESTAURANT

9 State St., Bloomfield
Call 748-7414

WHY NOT TAKE A 20 MINUTE VACATION.

By visiting us for only twenty minutes twice a week you can have a deep, natural tan all year long. We feature the patented Wolff System. With its unique Rellumium "SS" bulbs we guarantee that if you tan in the sun you will tan using this system, comfortably and in the shortest possible time.

Call or come by today and we'll show you how to look your best year around.

FREE TRIAL VISIT

"ILLUSIONS"

Tanning Center

408 Main St.
Belleville, N.J.
759-9795

You've heard us on WCBS and WINS Radio

5

minutes
via
Rte. 21
Belleville/
Nutley

YOU

can get the great deals on

**HONDA
PONTIAC**

or **VOLVO**

that have brought hundreds of people from ALL OVER the Tri-State area

**City
Motors**

River Drive, at Rte. 21, Passaic Park

777-1600

One of the real joys of the Holiday Season is the opportunity to say Thank You.

We wish you and your family a healthy and happy New Year.

*From the Board of Trustees,
Medical Staff and Employees of
Clara Maass Medical Center*

The Belleville Times

Serving Belleville Since 1909
Published Every Thursday
At 151A Washington Ave.
Belleville, N.J. 07109

Phone 759-3200

Publisher
FRANK A. ORECHIO
Assistant to the Publisher
Michelle Jeannotte

Annual Subscription
\$12.00
Senior Citizens
\$7.00

School Discipline

A formal conduct and discipline policy for the Belleville Middle School was presented to the School Board for action.

The eight-page document deals with student infractions ranging from cutting classes to vandalism and drug abuse.

It has been explained that the purpose of the policy is to make requirements at the Middle School consistent with the High School. Both Middle School Principal Mario DiMaggio and Vice Principal Frank Catrombone are to be commended for producing a necessary policy document.

We hasten to underscore the fact that Middle School discipline policy was developed in response to county recommendations and not because of problems at the Middle School. As a matter of fact, vandalism of school property is almost nonexistent at the Middle School.

For instance, there were fewer than 10 windows broken during the past year and minor graffiti signs. As to the more serious problems of drug abuse, the Middle School experienced only one incident of suspected drug abuse. There were no actual cases. This is a school record of which everyone could share pride in the result. Tribute for the result must be paid to Middle School Principal Mario DiMaggio.

Frank A. Orechio

Not Yet Guilty

A Belleville teacher-administrator has been suspended from his employment on charges that 10 years ago he allegedly sexually abused a student. The accuser recently admitted guilt in a satanic sex cult in neighboring New Jersey.

Upon being confronted with the allegation, the Belleville Board of Education suspended the teacher, pending a hearing before an Administrative Law Judge. In America, we are presumed to be innocent until found guilty. In this particular case, there is no indictment — there is an allegation by a person who used drugs and alcohol to induce several juveniles to participate in abnormal sexual behavior.

School Board Attorney Lawrence Schwartz has stated that the teacher has been in

the Belleville system for 15 years, compiling an unblemished record, and this is the first incident that any type of charge has been brought against him.

The board's action in suspending the teacher is proper and appropriate — what is equally proper and appropriate is that we withhold judgement until the full story is told — all the facts are in — and the guilt or innocence of the accused is determined in the American way.

Frank A. Orechio

DiRuggiero is right

Public Safety Commissioner Ralph DiRuggiero has introduced a bond ordinance that would permit the commission to purchase two new ambulances. The purchase of these much needed new vehicles will cost approximately \$90,000.

Presently, Belleville, has two ambulances and uses a police emergency vehicle as a back-up. The vehicles are in service 24 hours a day, seven days a week; and recently, the township was obliged to send an ambulance from a South Jersey firm because the ambulance became disabled. DiRuggiero indicated that the estimated repairs for one ambulance alone as \$15,000.

It makes sense for the

Township Commission to approve the DiRuggiero ordinance so that Belleville residents can rest in the knowledge that when emergency aid is needed, no one need worry about emergency transportation to a hospital.

Frank A. Orechio

Letters in Print

If You Drink, Think! Are You Fit to Drive?

To the editor:

The Traffic Officers Association of Essex County would like to extend a sincere greeting to the many drivers who will be traveling on our roadways during this busy holiday season.

We are hopeful that everyone will drive with their safety and the safety of others uppermost in their minds and maintain good defensive driving attitude. Defensive driving is defined as "driving to avoid accidents in spite of the incorrect actions of others or adverse conditions."

The adverse condition involved in most vehicle accidents, is the condition of the driver. We all have a responsibility to be certain that we are mentally and physically fit before driving our vehicle. Before driving, we should ask ourselves how we feel mentally. Are we angry, frustrated, depressed, etc.? What is our physical condition? Are we fatigued? Do we have a medical disability? Have we consumed any alcohol or taken any drugs?

It is necessary for us to make many decisions and maneuvers when we drive. Most often, we have ample time to make our judgement and maneuver without a problem. However, in an emergency situation,

things happen very fast. If we are not mentally and physically prepared, we most likely will not react in time to avoid an accident.

The use of alcohol or other drugs is especially dangerous because they also affect our vision and perception.

One of the best defensive maneuvers that we can take to protect ourselves and our families against the incorrect actions of others is our seat belts and child restraints.

Many of us in the Traffic Officers Association have been police officers for a long time and have investigated many fatal crashes. Not many, if any of us, ever had to unbuckle a dead person from their seat belt.

We would like to encourage anyone who drives, to think before getting behind the wheel. Think of the penalties involved if you commit an infraction of the law. But, most important still, think of the responsibility that we accepted when we were given our "privilege" to drive.

Best wishes for a happy and prosperous 1985 from the Traffic Officers Association of Essex County.

Sincerely,
Sgt. Russ Van Zile, CGPD
Public Relations Chairman of Essex County

Where Was the Town When House Burned?

To the editor:

I think it is a disgrace that the town of Belleville does not help people in time of disaster. On Saturday, Dec. 15, at 6:30 a.m., a Clinton Street home was destroyed leaving two families homeless. Did the town help? No. It took the American Red Cross, St. Peter's Parish members and the Belleville Knights of Columbus to aid these families with clothing, lodging, furniture and money to make their burden easier.

Where was the fire department? It was on a training session when the fire broke out. That plus the chagover of telephone numbers meant that the Nutley Fire Department had to come to our aid. It seems awfully strange that a town like Belleville can't be run efficiently, but when the Public Works Department building burns down and the deed to the building can't be found, what do you expect?

The people of Belleville make the town possible to run by paying property taxes and parking violations. But the town doesn't help the people in time of dire emergencies; people get nothing in return from the town officials. Yet they promise us the world when running for

election. But it isn't surprising really when the town officials are getting richer and the people here in Belleville have to suffer. The town doesn't even pave the streets which are in terrible shape. How can they help families in need?

Thank you again to the above mentioned organizations and any other organizations helping to make this relief possible. No thanks at all to the town officials for letting this go on neglected.

Name withheld by request

Many Thanks

To the editor:

I wish to thank the Belleville Fire Department and the Clara Maass Paramedics for their prompt response to my call for help during my husband's recent illness.

I shall never forget how quickly they worked to help him. They worked so efficiently together, many thanks.

Sincerely,
Louise Marano
Belleville

Seeds of Love Are Sown By This Kind, Loving Lady

By Lair dos Santos

Can you capture a smile with a pen? I lack the words to describe these warm, special feelings that I hold so dear toward a great, kind and loving lady, who, I, in deep love and admiration have come to lovingly call "Grandma" and sometimes, "Mama."

Only by God's hand could I have been led to search in a week old-paper for a position as a companion-nurse's aide that brought me to this special home. Here, I have been shown kindness in its truest meaning.

Rose Orechio, or "Grandma," as I like to call her, has that special quality of life that is an inspiration and a privilege to know her and her family. These qualities have rippled into the lives of each of her children and family members as they too possess these unique qualities and have made my five months with them a rich and rewarding experience. For these things, and those that words cannot express, I want to say "Thank you" to "Grandma" and to each member of the family who, on countless occasions, have gone out of their way to make me feel needed, wanted, loved, and yes, even made me feel like I am part of the family.

For all of this — I'm so thankful to you and to my God who directs my paths. May this loving God bless you all richly. May the peace that is in Christ Jesus be yours on this Christmas and each day of your lives. May He give you all the desires of your hearts. A very Merry Christmas and a Happy New Year to all.

(Publisher's Note: The grand lady that Lair writes about is my mother. We in the Orechio family love Lair dos Santos

just as much as she loves our mother — for over the past months, Lair, very much, has become a part of the family. She is a loving person who dedicates her life in a manner which brings a smile to the faces of those lucky enough to have their lives touched by this beautiful child of God. — Frank Orechio)

Reader's Prayer For New Year

To the editor:

As the New Year, 1985, hopefully a bright New Year, unfolds before us, may we again thank God, for His ever present love and understanding.

As we look back over the year that has just past, we can remember so many things for which we are truly thankful, Lord.

In this coming year, we pray You will hold this weary world in Thine arms! Whisper words of wisdom to our leaders, so that they may guide us from all worldly strife and truly keep us in ways of Peace.

May we all enjoy a Happy New Year, with peace on earth and good will to all.

May God bless America, our great nation. May we all give thanks, for His ever present guidance and love.

Sincerely,
Philip W. Bell
Toms River

Golden Comments

By James R. Golden



In a previous column we commented about the phone rate increase. adverse federal agency regulations are inflicting upon the consuming public, unless congressional action is imposed to prevent these arbitrary hardships from becoming a reality starting in mid-1985.

After the news breaking Nov. 15 access charge recommended fee of \$2.35 added to the monthly phone bill by the panel to the Federal Communication Commission (FCC), ultimately to become effective in mid-1986 for residential phone customers we were further annoyed four days later to learn that NYNEX (that's the divested Bell Company in the New York State area) had filed for a high rate increase with the New York State Public Utility Commission which would amount to about a \$3.65 monthly phone rate increase on the residential customer.

Added together that would total an additional charge monthly of \$6 without any benefit or improvement in service. Its only purpose being to "soak" the many small residential users of the telephone to pay for the reduced long-line phone rates for corporations. President Reagan's favorite.

What one must ponder, actuated the U.S. Justice Department to institute this divestiture action against AT&T. The long costly trial has brought chaos and disarray to a profitable, stable and reliable necessary service. The resultant effects convincingly establish the foolishness of the undertaking which leaves the resident user at the mercy of Orndell's 1984 big-brother — the government that runs our lives.

Normally, all utilities were regulated by State Boards of Public Utilities which heard rate case appeals, while a public advocate represented the interests of the consumers. After several hearings and careful review of the testimony and submitted evidence the BPU came up with a fair and reasonable ruling, usually a compromise that seldom pleased everyone, but, was acceptable.

Now, even that state regulatory control over these utilities may be in jeopardy according to New Jersey Congressman Matthew Rinaldo (8-Rd. Dist.) who reports that a recent Supreme Court ruling could be used to challenge most state and local rate regulations and could lead to the elimination of the New Jersey law that gives the BPU regulatory power.

Should that be true, and it should be investigated, it would become incumbent upon the CoNGress to legislate, as it has in the past, against such an abusive arrogation of legislative power by the Supreme Court to be ultra vires. It seemingly would abrogate the principal of States Rights which are inherently incorporated in the constitution.

Despite the apparent attempt of the federal agencies to wrest from both state and local authorities the power of these jurisdiction, efforts must be exerted to block this subtle usurpation of home rule rights.

Another unsavory practice employed on occasion, is the custom of federal agencies publishing in the National Register bizarre quirky regulations which become effective if not challenged within a prescribed period of time, which often entails costly litigation to thwart.

This federal attempt to shackle the residential phone customers in a bind to offer low long-lines calls to corporate interests must not be condoned nor tolerated. The call of the dissatisfied residential telephone customers throughout the nation must not be ignored. The national lawmakers in Congress must heed the determination of their constituents throughout the land to bar this "access charge" wrinkle the White House crowd hopes to shove down the throat of our humble masses.

We the people, do give a damn...we don't want it...if our plea is denied...we can still have the phone line cut and buy a home base C.B.

How cruel can our supposed benefactors be? Surely no less than the British Crown of Revolutionary time.

Pioneers of New Jersey Bell Bring Holiday Cheer



Santa's Helpers — This bunch of clowns helped distribute Christmas gifts to patients at the Essex County Geriatrics Center in Belleville during a party sponsored by the "540" Council of H.G. McCully Chapter of the Pioneers of New Jersey Bell. Music and entertainment was provided by "The Entertainers."



Volunteers Give Christmas Party — Mary Vascinnio (right), president of the "540" Council of the H.G. McCully Chapter of the Pioneers, issued flowers to patients at the Essex County Geriatric Center in Belleville. The Pioneers, a volunteer group from New Jersey Bell, sponsored the Christmas party.

Provident Savings Will Sell Student Loans to Sallie Mae

The Provident Savings Bank, Jersey City, will obtain up to \$112 million for student loans it originates under a new commitment agreement from the Student Loan Marketing Association (Sallie Mae) of Washington, D.C. Sallie Mae officials estimate that its commitment to the bank could finance nearly 4,000 student loans over the next three years.

Provident Savings Bank will obtain funds by selling student loans it makes to Sallie Mae, the major financial intermediary for education credit and the nation's largest single source of funds for guaranteed education loans.

"Provident has provided more than \$15 million in Guaranteed Student Loans to local students since 1969," said Kenneth F. X. Albers, Chairman of the Board and Chief Executive Officer, Provident Savings Bank. "By sell-

ing student loans to Sallie Mae, we can, in effect, recycle our funds and thus assure our continued ability to meet the financial needs of our student customers."

In announcing the transaction, Dennis A. Kernahan, Sallie Mae's senior vice president, marketing said, "The availability of Guaranteed Student Loans has become increasingly important, as the cost of education has continued to rise at a faster pace than inflation or discretionary income and as more students are pursuing higher education and advanced degrees. By providing financial services to education lenders, Sallie Mae helps assure the continued availability of these loans."

Guaranteed Student Loans are the predominant financing vehicle for students attending postsecondary educational institutions. Maximum annual loan amounts

for undergraduate and graduate students are \$2,500 and \$5,000 a year, respectively. Loans are originated by private lenders and public agencies and are insured by the federal government. Students are required to begin repaying the loans on a monthly basis after they graduate or leave school.

By buying insured student loans and providing other financial services to financial and educational institutions, Sallie Mae replenishes local supplies of student credit. Last year the corporation provided \$2.6 billion in funds and commitments for student loans nationwide. Sallie Mae, whose stock is traded on the New York Stock Exchange, raises funds to provide these services by borrowing in the nation's capital markets.

CHEERS: • CHEERS: • CHEERS: • CHEERS: • CHEERS: • CHEERS: • CHEERS: • CHEERS: •

JOIN US

In Our 1st Annual Party Extravaganza!

FRIDAY, DECEMBER 28th

Our 1st Annual Christmas Party For All Our Friends & Customers



- Complimentary Buffet
- Live Entertainment By "Best of Friends"

**MONDAY, DECEMBER 31st
NEW YEAR'S EVE**

welcome 1985 with us

- Complimentary Hot & Cold Buffet
- Midnight Champagne Toast
- Hats, Noisemakers
- Oldies Music

NU-PLAS Pub & Restaurant

538 Union Ave.
Belleville • 450-0879

CHEERS: • CHEERS: • CHEERS: • CHEERS: • CHEERS: • CHEERS: • CHEERS: •

Post Office Decentralizing Mail Carriers

The Newark Main Post Office will decentralize mail carrier operations from the Belleville Annex facility, 245 Main St., to Belleville and Nutley beginning in 1985.

The relocation will start at Newark's North Station, 243 Broadway, on Jan. 5; the Belleville Branch, 413 Washington Ave., on Jan. 12; and the Nutley Branch, 372 Franklin Ave., on Jan. 19.

In accordance with the move, relay boxes are being strategically erected along these routes. The green boxes look like regular mail deposit boxes, but are used by the letter carrier to hold mail for pickup upon reaching that point of the route. This lessens the carriers' burden.

In Newark, where 26 carrier routes are being transferred, 54 relay boxes have already been installed. Belleville will receive 85 boxes to accommodate the 28 returning routes, while Nutley will get approximately 50 on the 27 routes being relocated.

ORTHODONTICS



AFFORDABLE BRACES FOR CHILDREN & ADULTS

CONVENIENT HOURS (EVENINGS TOO!)

DENTAL INSURANCE WELCOME

SECOND OPINIONS PROVIDED

**NEVER A CHARGE FOR CONSULTATIONS
DR. MICHAEL B. FITZPATRICK
484 Washington Ave. Belleville
759-2173**

OVER 1500 MOVIES

**NO CLUBS, NO MEMBERSHIP FEE
NOW SHOWING!**

PHILADELPHIA EXPERIMENT
DREAMSCAPE
TOP SECRET
POLICE ACADEMY
NEVERENDING STORY
LAST STRAFIGHTER
BOLERO
THE NATURAL
CONAN THE DESTROYER
36 CANDLES
PURPLE RAIN
EMPIRE STRIKES BACK

**WEEKDAY SPECIAL \$8
3 Tapes for 2 Days**

**Rent any Tape
Tues.-Thurs. . . . \$1.89**

- All Ratings G-XXX
- We Rent and Repair VCRS
- Videotaping For All Occasions

Coming Soon: Woman in Red, Red Dawn, Tightrope, Best Defense, Muppets Take Manhattan

Instant Video

**186 Main Avenue
Passaic Park • 778-4751**

Nutley Savings' Holiday Hours

Nutley Savings will close for the New Year's Holiday at 3:00 p.m. Monday, December 31st — New Year's Eve. As usual full Automatic Teller Services are available for our MAC Card customers at any hour, 365 days a year.



Nutley Savings

MAIN OFFICE: 371 Franklin Avenue, Nutley, N.J. 07110 • Phone: 661-3200
BRANCH OFFICE: 221 Washington Street, Newark, N.J. 07102 • Phone: 623-7090





Mr. and Mrs. Robert Justice III — nee Susan Basilone

Susan Basilone, Robert Justice III Have Exchanged Wedding Vows

Susan Anne Basilone of Middlesex became the bride recently of Robert Justice III, son of Mr. and Mrs. Robert Justice of Belleville.

The Rev. Patrick Durkin performed the ceremony at Our Lady of Mount Virgin Church, Middlesex. A reception followed at the Somerville Inn, Bridgewater. Mary Basilone of Middlesex was her sister's maid of honor. Bridesmaids included Mary Anne Justice of Belleville, sister of the groom, and Rose Mary McPherson of Oakhurst.

Michael Iversen of Nutley was the groom's best man. Ushering were the bride's brothers, Richard, Walter and Joseph Basilone of Middlesex.

Mr. Justice, a graduate of

Middlesex High School and Rutgers College of Engineering, Piscataway, is a quality control engineer with ITT Avionics, Nutley.

Mr. Justice, an alumnus of Essex Catholic High School, is com-

pleting degree requirements at New Jersey Institute of Technology. He is with Stillman & Hoag, Inc., Englewood.

The couple honeymooned in Hawaii and have made their home in Nutley.



Christine Palumbo Will Be Married To Mark Davis

Mrs. Phyllis Schumacher of New Milford and Robert Palumbo of Hackensack have announced the engagement of their daughter, Christine, to Mark Davis, son of Mr. and Mrs. Harold Davis of 157 New St. A July 27, 1985 wedding is planned.

October Voyagers — Mr. and Mrs. Bucky Cairo of Belleville pose on the gangway of the luxury liner, S.S. Oceanic, docked in Nassau, the Bahamas. The couple also visited Bermuda.

HEALTH WISE



By Ralph J. DiMaio D.C.

Some people persist in thinking of chiropractic as the best treatment for pain in the back and legs. It is true that chiropractic is often used in the treatment of back trouble but it can also be effective for disorders that occur anywhere in the body.

Subluxations...misaligned vertebrae...may cause the irritation of any of the nerves which leave the spine between the various vertebrae. Depending on the particular nerve involved, such conditions as bursitis, asthma, sinusitis and headaches as well as back pain, may result.

Chiropractic finds and corrects the cause of illness so the body can heal itself.

DR. RALPH J. DI MAIO
Chiropractor
625 Joralemon St. 751-8805
Belleville

Grand Union Wheat Germ Brownies

From Grand Union and its Cook's Harvest specialty department comes this holiday recipe for wheat germ brownies. At Cook's Harvest, you'll find hundreds of varieties of grains, flours, beans, seeds, nuts, dried fruits and herbs and spices sold in bulk. The fresh grains have been subjected to minimal processing and the flours retain at least some of the bran or the germ of the grain for naturally nutritious baking.

Wheat Germ Brownies
1 cup (two sticks) sweet butter
4 oz. unsweetened chocolate
2 oz. semi-sweet chocolate
4 eggs
2 cups sugar
1 cup unbleached white flour
1/2 cup wheat germ
2 tsps. vanilla extract
1 cup chopped pecans or walnuts (optional)

1. Preheat oven to 350 degrees. Grease a baking pan 9 x 13 x 2 inches.
2. Melt butter, unsweetened chocolate and semi-sweet chocolate together over low heat in a small saucepan. Allow to cool to room temperature.
3. Beat eggs and sugar together until well-blended. Add cooled chocolate mixture. Stir in flour, wheat germ, vanilla and optional nuts until just mixed. Spread in prepared pan.
4. Bake 30 minutes. Allow to cool completely before cutting or removing from pan. Makes 3 to 4 dozen brownies.

Stork Club

Matthew J. Sidie

A first child, a son, Matthew James, was born to Mr. and Mrs. Thomas Sidie of New Providence Dec. 7 at St. Barnabas Medical Center. Birth weight was seven pounds, nine ounces.

Mrs. Sidie is the former Karen Mostello, daughter of Mrs. Lee Mostello of Belleville and the late Mr. Angelo Mostello. Mr. Sidie is the son of Mr. and Mrs. James Sidie of Westfield.

Brian M. Dieck

A first child, a son, Brian Matthew, was born to Mr. and Mrs. Scott Dieck of Belleville Nov. 25 at Clara Maass Medical Center. Birth weight was seven pounds, three ounces.

Mrs. Dieck is the former Sharon Mougell, daughter of Mr. and Mrs. Eugene C. Mougell of Belleville. Mr. Dieck, son of Mr. and Mrs. Frederick Dieck of Kearny, is a pharmacist with Marc Pharmacy, Harrison.

Cory Finch

A son, Cory, was born to Maudlin Finch Jr. and Shirley C. Thomas-Finch Jr. of 822 Main St. Dec. 5 at Clara Maass Medical Center. Birth weight was seven pounds, three ounces. He joins William Jay, 19 and Maudlin III, eight.

Grandparents are Mr. and Mrs. Walter Thomas of Jersey City, Mr. and Mrs. Joe Cioffanti of Mr. and Mrs. Maudlin Finch Sr. Mr. Finch is an engineer at Allied Maintenance.

Joseph Zaccardi

A second child, a son, Joseph, was born to Mr. and Mrs. Joseph Zaccardi of 88 Cedar Hill Ave. Dec. 6 at Clara Maass Medical Center. Birth weight was eight pounds, three ounces. He joins Diane, five.

Mrs. Zaccardi is the former Joan Kaplan, daughter of Irene Kaplan of Belleville. She is a registered nurse at Clara Maass. Mr. Zaccardi, son of Mr. and Mrs. Joseph Zaccardi of Leonardo, is assistant manager of benefits at Hoffmann-La Roche, Nutley.

Lisa Renda

A third child, a daughter, Lisa, was born to Mr. and Mrs. Santo Renda of 39 Salter Place Dec. 9 at Clara Maass Medical Center. Birth weight was six pounds, 11 ounces. She joins Rosanne, eight and Santo Jr., two.

Mrs. Renda is the former Vera Orefice, daughter of Mr. and Mrs. Frank Orefice of Bloomfield. Mr. Renda, son of Mrs. Rose Renda of Bloomfield and the late Mr. Gus Renda, is a professional musician, guitar instructor and lead performer, singer and arranger with his own band, Sandy and the Wanderers.

Boys Scouts Are Selling Coupon Book

Boy Scout Troop 301, sponsored by Wesley United Methodist Church, has announced orders for the new 1985 edition of "Entertainment '85" are now being accepted.

To place an order, call Jay at 759-3590.

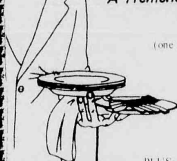
PARK MANOR NURSING HOME

Dedicated to Better Patient Care
Specializing in Female Patients
PROFESSIONAL NURSING STAFF
REHABILITATION PROGRAM
PHYSICAL THERAPY
OXYGEN FRACTURE EQUIPMENT
SPECIAL DIETS

- AGED
 - CONVALESCENT
 - CHRONICALLY ILL
 - POST-OPERATIVE
- 23 Park Place, Bloomfield
743-7772
Member of St. American
Nursing Home Assoc.
Professional Care in a Homelike Environment

HAPPY HOLIDAYS FROM

BELLA CASA CATERERS "A Tremendous Variety"



HOT AND COLD BUFFET

\$6.25 per person

(one hot tray selection for every 10 guests)

1. Lasagna
2. Baked Ziti
3. Eggplant Parmigiana
4. Baked Chicken
5. Chicken Cacciatore
6. Chicken Murphy
7. Sausage & Peppers
8. Veal & Peppers

PLUS: Cold cut tray • cole slaw • potato salad • macaroni salad • hot pepper salad • pickles • tossed salad • assorted rolls • coffee • paper goods.

307 Union Ave.
Belleville 450-0602

Plaza Bootery

SEMI-ANNUAL SALE

— WOMEN'S SHOES —

Red Cross • Bass • Dexter



30%

OFF REG. PRICE

SPECIAL GROUP



Life Stride • 9 West • Desco

— WOMEN'S BOOTS —

Fry • Desco • Sporto



20% to 50%

OFF REG. PRICE



— MEN'S SHOES —

Florsheim • Clark • Bass



20%

OFF REG. PRICE

SPECIAL GROUP



Plaza Bootery

483 Franklin Ave.

Free Parking

Nutley, N.J. 667-8964

Shoe Repair

LMV LEASING, INC.

A XEROX Financial Services Company

is proud to announce the appointment of
James W. Yuppa
as District Sales Manager covering
New Jersey, New York City and Eastern Pennsylvania
LMV has provided autos and trucks of all
makes throughout the U.S. for over 30 years

Contact **James W. Yuppa**

LMV LEASING, INC.

11 Race Street • Nutley, NJ 07110
201-854-9191

(offices to be moved to a permanent location in Whippany, NJ in late 1984)



Installation Ceremony — Chris Albanese (right), president of the Belleville Italian-American Civic Association, receives a toy cannon from Thomas Giordano, general chairman of the Bloomfield Joint Memorial Committee. Giordano was the installing officer for the ceremony held at Beppy's Restaurant in Newark.



Newly-elected BIACA Officers — New officers of the Belleville Italian-American Club were recently installed at a combined Christmas party and installation ceremony held at Beppy's Restaurant and Lounge in Newark. Officers and members include (l-r): Adolf Vecchione, recording secretary; Frank Ceres, treasurer; Pat Rotondo; Leo Carlo; Chris Albanese, president; Emil Casale, first vice president; Lucy Vecchione, corresponding secretary; Joseph Fomartotta, sergeant at arms; Nicola Gracagnola; and Savino Balducci, trustee.

Orechio Sponsors Bill To Build Water Plant

A measure sponsored by Senate President Carmen A. Orechio which will provide the means to build a water filtration plant to solve Bloomfield's water quality problem has received final legislative approval and now goes on to Gov. Tom Kean's desk.

The bill, known as the Water Supply and Water Quality Treatment Privatization Act, authorizes construction of the filtration plant by private enterprise.

"Bloomfield has been forced to endure discolored water for too long," Senator Orechio said. "Building this facility will finally allow Bloomfield to enjoy the clean water they deserve."

According to Senator Orechio, who is a Nutley commissioner, the Privatization Act will also incur a substantial cost savings.

"Through consultation with experts in the area it has been determined that the filtration plant can be constructed by private enterprise at a savings of up to \$10 million," he said.

Senator Orechio also stated his bill to restore an \$8 million grant toward the construction of the proposed \$40 million water filtration plant has passed the Senate and now awaits action in the Assembly, where identical legislation is sponsored by Assemblyman Buddy Fortunato.

"This appropriation measure will restore funds as per an existing law which provided a 20 percent state grant toward the total cost of the filtration plant," Orechio said. "Unfortunately, this funding was lost when an emergency appropriation was needed to deal with the drought of 1981," he continued.

"It is now time to restore these authorized funds as a matter of simple justice so that this needed project can get off the ground," Orechio stressed.

"Bloomfield's complex water problem requires a complex solution," the Senate President stated. "Residents can be certain of my determination to continue working toward the best solution," he said.

Kathleen Weir Earns Masters At Michigan

Kathleen M. Weir of Overlook Avenue recently received a master's degree in science from the Park and Recreation Resources at Michigan State University.

At the University Convocation, undergraduate students were addressed by Olympic silver medalist Judith Brown-King of Eugene, Ore., and Steven Spivey, a successful farmer in New Windsor, Ill.

Brown-King was a 1983 MSU graduate with a B.A. degree in audiology and speech sciences. She was the 1983 NCAA champion in the 400 meter hurdles, the Pan American champion in the 400 meter hurdles and the mile relay, and the silver medalist in the 400 meter hurdles at the 1984 Olympic Games.

Spivey is a managing partner of Spivey Angus Farm in New Windsor, Ill. He received his B.S. degree in animal husbandry in 1977 and M.S. in animal science in 1981, both from MSU.



Holiday Carolers — This group of Christmas carolers is one of many displays located throughout the township. This joyous bunch is part of a Christmas display exhibited on Little Street.

Advanced Acting Class For Actors, Students At Pushcart Players

Pushcart Players Repertory Theater for Children, Verona, has announced an advanced class for professional actors and acting students will be added to Pushcart's ongoing theatre education program, beginning in February, 1985.

Admission to the class will be by audition and interviews which are currently being scheduled. Classes will be held in the Pushcart studio, located at 197 Bloomfield Ave., Verona, and will be instructed by Nutley resident Albert Insinnia, director of Pushcart's Department of Theatre Education.

Insinnia has performed extensively on Broadway, film and television. He is known to New York audiences for his roles in

"Two Gentlemen of Verona," "Grease," "Jacques Brel," and most recently as Mordred with Richard Harris in "Camelot." He is also a favorite with children throughout the Mid-Atlantic region for whom he has performed in hundreds of Pushcart presentations over the past year.

Combining his teaching and acting career over the years, Insinnia has developed programs at the Dallas Theatre Center, Houston and California. He began the Theatre Lab and programs for kids at Pushcart last season which have met with huge success. Programs now include Creative Drama, Theatre-By-Kids, Theatre-By-Teens and The Acting Lab for adults on Monday evenings.

Blue Cross, Blue Shield Will Pay for Transplants

Blue Cross and Blue Shield of New Jersey have announced that they will provide benefits for heart, liver and pancreas transplants and for combination heart-lung transplants beginning Jan. 1.

Benefits for these procedures will be added automatically to Blue Cross and Blue Shield coverage for individuals and members of small groups of four or more. Large groups (50 or more members) will be able to choose whether to include the benefits in their employees' health coverage.

Benefits for organ transplants will be paid up to the limits of the subscriber's Blue Cross contract or certificate. Blue Shield will pay up to reasonable charges for medical-surgical services regardless of what Blue Shield program that patient has. In addition, the transplant must be authorized in advance by Blue Cross and Blue Shield and it must be performed in a qualified institution.

Until now, such procedures have been considered experimental or investigative and, as such, have not been paid for under Blue Cross and Blue Shield contracts, according to Otto G. Matheke, M.D., medical director of Blue Cross.

Coverage for organ transplantation is not new. Kidney transplants are well established and have been reimbursed by Blue Shield since 1969. Corneal transplants have been reimbursed since the 1950s.

DENTALLY SPEAKING

By Drs. James D. Muglia and Paul N. De Maio

Over Franklin Avenue Santa put on his brakes because his tooth suddenly ached. He came down the chimney with a holiday "Is there a Dentist here?" yes I said — my father. Oh good I ate some candy from whence I came and now my tooth is giving me pain. I said Santa come with me so you can floss its right here in one of the bureau drawers. Santa, my Dad's a dentist in Nutley and my name is Steve but don't worry I'll get you through this Christmas Eve. Yes Steve it does feel so much better thanks to you and your floss threader. Remember Santa after you're through stop at my dad's and see what he can do. I will Steve and for the record I'll stay away from candy and eat better. Now Steve, take care and go back to sleep so I can finish leaving you some treats. HO! HO! HO! Merry Christmas Nutley Sun Readers and have a good night and may all of you keep your good teeth.

Dentally Speaking
671 Franklin Avenue
Nutley, N.J. 07110

Featuring
**SPACIOUS
SOLAR
ROOM**

Immediate
Occupancy!

STARTING AT \$75,000

Low Monthly Maintenance Fee Starting at \$49.88
All below items included in price:

- 5 Acres Recreation Park Like Setting
- Club House approx. 4,000 sq. ft.
- Health Club
- Swims, Hot Tubs
- Tennis Courts, platform and regular
- Large size pool
- Spectacular insulated solar room

Models open for inspection 10 to 8

Rolling Hills of Andover

222 McPeak Road, Andover Office 383-0874
DIRECTIONS: Rt. 80 West to Exit 25. Proceed to 206 North 7 miles to Lincrest Road. Turn approximately 4 miles to models. Adjacent to Andover Nursing Home

**Phase II
Now Open As Of
June 10th**

Low Down Payment
Long Term
Financing Available

Buying Is
Cheaper Than
Renting

ARLINGTON JEWELERS

Presents Its
DIAMOND AND GOLD SALE BONANZA!

Buy Now And Get Quality Gold And Diamond Jewelry At Tremendous Savings!
Our New Location Gives You Twice The Selection For The Holidays!

SAVE UP TO 50% ON OUR 14K GOLD & DIAMOND

SPECIAL SALE ITEMS*

SPECIAL SALE ITEMS	REG.	NOW
2 1/2" S Chain Bracelet	116.00	57.99
16" S Chain Necklace	34.00	16.99
18" S Chain Necklace	38.00	18.99
24" S Chain Necklace	48.00	23.99
16" Special Pendant Chain	34.00	16.99
18" Special Pendant Chain	38.00	18.99
3" Rope Bracelet	52.00	30.00
16" Rope Necklace	120.00	72.00
18" Rope Necklace	130.00	80.00
20" Rope Necklace	150.00	90.00
24" Rope Necklace	180.00	100.00
Diamond Heart Initial Pendant	65.00	40.00
Diamond Heart Anklet	65.00	40.00
Ladies Diamond Initial Bracelet	120.00	60.00
Ladies Small Diamond Initial Ring	130.00	70.00
Ladies Medium Diamond Initial Ring	170.00	90.00
Ladies Large Diamond Initial Ring	280.00	140.00
4 1/2" 14K Gold Diamond Initial Ring	225.00	112.50
Diamond Stud Earrings 1/4 ct. T.W.	325.00	162.50
Diamond Stud Earrings 1/2 ct. T.W.	430.00	215.00
Diamond Stud Earrings 3/4 ct. T.W.	700.00	350.00
Diamond Stud Earrings 1 ct. T.W.	2400.00	1400.00
Custom Made Name Necklace (chain incl.)	150.00	80.00
Mother's Ring	150.00	75.00
Mini Crocifix Ring	65.00	42.00
Ladies Crocifix Ring	80.00	50.00
Gents Crocifix Ring	38.00	25.00
Small Diamond Cut Initial Ring	55.00	35.00
Filigree Initial Ring	125.00	75.00

*Come see one of the largest selections of fine jewelry in New Jersey at great savings! Huge selection of chains, charms, earrings, bangles, bracelets, watches, rings, diamonds and diamond jewelry!

Buy now for the upcoming holiday season!
Use our layaway plan for your shopping ease!

Hours: Mon-Fri 10am-8pm
Sat 10am-6pm

BRANCH STORE: 261 FRANKLIN AVE. NUTLEY 661-1558
MAIN STORE: 36 RIDGE ROAD, N. ARLINGTON 998-5036

Use these coupons to get a great savings on our complete line of 14K & 18K Gold Jewelry, diamonds & watches.

ARLINGTON JEWELERS
261 Franklin Ave., Nutley 661-1558
36 Ridge Rd., N. Arlington 998-5036

PAY TO THE ORDER OF: **THE BEARER** \$90.00
NINETY DOLLARS

THIS CERTIFICATE IS WORTH \$90.00 ON ANY \$1,000.00 PURCHASE. \$160.00 ON ANY \$2,000.00 PURCHASE. \$130.00 ON ANY \$1,500.00 PURCHASE. \$115.00 ON ANY \$1,000.00 PURCHASE. \$100.00 ON ANY \$750.00 PURCHASE. \$85.00 ON ANY \$500.00 PURCHASE. \$70.00 ON ANY \$350.00 PURCHASE. \$55.00 ON ANY \$250.00 PURCHASE. \$40.00 ON ANY \$150.00 PURCHASE. \$25.00 ON ANY \$100.00 PURCHASE. \$10.00 ON ANY \$50.00 PURCHASE. \$5.00 ON ANY \$25.00 PURCHASE. \$2.50 ON ANY \$12.50 PURCHASE. \$1.25 ON ANY \$6.25 PURCHASE. \$0.625 ON ANY \$3.125 PURCHASE. \$0.3125 ON ANY \$1.5625 PURCHASE. \$0.15625 ON ANY \$0.78125 PURCHASE. \$0.078125 ON ANY \$0.390625 PURCHASE. \$0.0390625 ON ANY \$0.1953125 PURCHASE. \$0.01953125 ON ANY \$0.09765625 PURCHASE. \$0.009765625 ON ANY \$0.048828125 PURCHASE. \$0.0048828125 ON ANY \$0.0244140625 PURCHASE. \$0.00244140625 ON ANY \$0.01220703125 PURCHASE. \$0.001220703125 ON ANY \$0.006103515625 PURCHASE. \$0.0006103515625 ON ANY \$0.0030517578125 PURCHASE. \$0.00030517578125 ON ANY \$0.00152587890625 PURCHASE. \$0.000152587890625 ON ANY \$0.000762939453125 PURCHASE. \$0.0000762939453125 ON ANY \$0.0003814697265625 PURCHASE. \$0.00003814697265625 ON ANY \$0.00019073486328125 PURCHASE. \$0.000019073486328125 ON ANY \$0.000095367431640625 PURCHASE. \$0.0000095367431640625 ON ANY \$0.0000476837158203125 PURCHASE. \$0.00000476837158203125 ON ANY \$0.00002384185791015625 PURCHASE. \$0.000002384185791015625 ON ANY \$0.000011920928955078125 PURCHASE. \$0.0000011920928955078125 ON ANY \$0.0000059604644775390625 PURCHASE. \$0.00000059604644775390625 ON ANY \$0.00000298023223876953125 PURCHASE. \$0.000000298023223876953125 ON ANY \$0.000001490116119384765625 PURCHASE. \$0.0000001490116119384765625 ON ANY \$0.0000007450580596923828125 PURCHASE. \$0.00000007450580596923828125 ON ANY \$0.00000037252902984619140625 PURCHASE. \$0.000000037252902984619140625 ON ANY \$0.000000186264514923095703125 PURCHASE. \$0.0000000186264514923095703125 ON ANY \$0.0000000931322574615478515625 PURCHASE. \$0.00000000931322574615478515625 ON ANY \$0.00000004656612873077392578125 PURCHASE. \$0.000000004656612873077392578125 ON ANY \$0.000000023283064365386962890625 PURCHASE. \$0.0000000023283064365386962890625 ON ANY \$0.0000000116415321826934814453125 PURCHASE. \$0.00000000116415321826934814453125 ON ANY \$0.00000000582076609134674072265625 PURCHASE. \$0.000000000582076609134674072265625 ON ANY \$0.000000002910383045673370361328125 PURCHASE. \$0.0000000002910383045673370361328125 ON ANY \$0.0000000014551915228366851806640625 PURCHASE. \$0.00000000014551915228366851806640625 ON ANY \$0.00000000072759576141834259033203125 PURCHASE. \$0.000000000072759576141834259033203125 ON ANY \$0.000000000363797880709171295166015625 PURCHASE. \$0.0000000000363797880709171295166015625 ON ANY \$0.0000000001818989403545856475830078125 PURCHASE. \$0.00000000001818989403545856475830078125 ON ANY \$0.00000000009094947017729282379150390625 PURCHASE. \$0.000000000009094947017729282379150390625 ON ANY \$0.000000000045474735088646411895751953125 PURCHASE. \$0.0000000000045474735088646411895751953125 ON ANY \$0.0000000000227373675443232059478759765625 PURCHASE. \$0.00000000000227373675443232059478759765625 ON ANY \$0.00000000001136868377216160297393798828125 PURCHASE. \$0.000000000001136868377216160297393798828125 ON ANY \$0.000000000005684341886080801486968994140625 PURCHASE. \$0.0000000000005684341886080801486968994140625 ON ANY \$0.0000000000028421709430404007434844970703125 PURCHASE. \$0.00000000000028421709430404007434844970703125 ON ANY \$0.00000000000142108547152020037174224853515625 PURCHASE. \$0.000000000000142108547152020037174224853515625 ON ANY \$0.000000000000710542735760100185871124267578125 PURCHASE. \$0.0000000000000710542735760100185871124267578125 ON ANY \$0.0000000000003552713678800500929355621337890625 PURCHASE. \$0.00000000000003552713678800500929355621337890625 ON ANY \$0.00000000000017763568394002504646778106689453125 PURCHASE. \$0.000000000000017763568394002504646778106689453125 ON ANY \$0.000000000000088817841970012523233890533447265625 PURCHASE. \$0.0000000000000088817841970012523233890533447265625 ON ANY \$0.0000000000000444089209850062616169452667236328125 PURCHASE. \$0.00000000000000444089209850062616169452667236328125 ON ANY \$0.00000000000002220446049250313080847263336181640625 PURCHASE. \$0.000000000000002220446049250313080847263336181640625 ON ANY \$0.000000000000011102230246251564040236131680808203125 PURCHASE. \$0.0000000000000011102230246251564040236131680808203125 ON ANY \$0.00000000000000555111512312578202021560684041015625 PURCHASE. \$0.00000000000000555111512312578202021560684041015625 ON ANY \$0.0000000000000027755575615628910101028034202078125 PURCHASE. \$0.0000000000000027755575615628910101028034202078125 ON ANY \$0.0000000000000013877787807814455050514017101010390625 PURCHASE. \$0.0000000000000013877787807814455050514017101010390625 ON ANY \$0.00000000000000069388939039072275252570085505051953125 PURCHASE. \$0.00000000000000069388939039072275252570085505051953125 ON ANY \$0.000000000000000346944695195361376262850427525259765625 PURCHASE. \$0.000000000000000346944695195361376262850427525259765625 ON ANY \$0.000000000000000173472347597680688131425213762628504275259765625 PURCHASE. \$0.000000000000000173472347597680688131425213762628504275259765625 ON ANY \$0.00000000000000008673617379884034406571261188131425213762628504275259765625 PURCHASE. \$0.00000000000000008673617379884034406571261188131425213762628504275259765625 ON ANY \$0.000000000000000043368086899420172032856305906571261188131425213762628504275259765625 PURCHASE. \$0.000000000000000043368086899420172032856305906571261188131425213762628504275259765625 ON ANY \$0.0000000000000000216840434497100860164281529532856305906571261188131425213762628504275259765625 PURCHASE. \$0.0000000000000000216840434497100860164281529532856305906571261188131425213762628504275259765625 ON ANY \$0.00000000000000001084202172485504300821407647664281529532856305906571261188131425213762628504275259765625 PURCHASE. \$0.00000000000000001084202172485504300821407647664281529532856305906571261188131425213762628504275259765625 ON ANY \$0.0000000000000000054210108624275215004107037238321407647664281529532856305906571261188131425213762628504275259765625 PURCHASE. \$0.0000000000000000054210108624275215004107037238321407647664281529532856305906571261188131425213762628504275259765625 ON ANY \$0.000000000000000002710505431213760750020351861916037238321407664281529532856305906571261188131425213762628504275259765625 PURCHASE. \$0.000000000000000002710505431213760750020351861916037238321407664281529532856305906571261188131425213762628504275259765625 ON ANY \$0.00000000000000000135525271560688037500101753095808016037238321407664281529532856305906571261188131425213762628504275259765625 PURCHASE. \$0.00000000000000000135525271560688037500101753095808016037238321407664281529532856305906571261188131425213762628504275259765625 ON ANY \$0.0000000000000000006776263578034401875000508765454016037238321407664281529532856305906571261188131425213762628504275259765625 PURCHASE. \$0.0000000000000000006776263578034401875000508765454016037238321407664281529532856305906571261188131425213762628504275259765625 ON ANY \$0.00000000000000000033881317890172009375000254382727008016037238321407664281529532856305906571261188131425213762628504275259765625 PURCHASE. \$0.00000000000000000033881317890172009375000254382727008016037238321407664281529532856305906571261188131425213762628504275259765625 ON ANY \$0.000000000000000000169406589450860046875000127191363504008016037238321407664281529532856305906571261188131425213762628504275259765625 PURCHASE. \$0.000000000000000000169406589450860046875000127191363504008016037238321407664281529532856305906571261188131425213762628504275259765625 ON ANY \$0.000000000000000000084703294725430023437500006359568175004008016037238321407664281529532856305906571261188131425213762628504275259765625 PURCHASE. \$0.000000000000000000084703294725430023437500006359568175004008016037238321407664281529532856305906571261188131425213762628504275259765625 ON ANY \$0.00000000000000000004235164736271501171875000031797840875002004008016037238321407664281529532856305906571261188131425213762628504275259765625 PURCHASE. \$0.00000000000000000004235164736271501171875000031797840875002004008016037238321407664281529532856305906571261188131425213762628504275259765625 ON ANY \$0.00000000000000000002117582368113755859375000015898920437500100200

Leo J. Valeo, at 68; Retired Carpenter

Leo J. Valeo, 68, of Newark died Dec. 11 of his home.

Born in Northampton, Pa., he lived in Belleville before moving to Newark in 1945.

Mr. Valeo was a carpenter for the U.S. Construction and Millwork Co., Newark, from 1945 to 1965. He also worked for the Brotherhood of Carpenters Union, Local 821, Newark, prior

to his retirement in 1975.

He was a member and vice president of the Branch Brook Park Senior Citizens of Newark and a lifelong member of the Nutley chapter of the Disabled American Veterans. Mr. Valeo served in the Army during World War II.

Surviving are his wife, Connie; a daughter, Mrs. Pamela Carde; two sisters, Mrs. Rose Livingstone and Mrs. Kate Courter; two brothers, Tony and Jimmy, and two grandchildren.

A Mass was offered in St. Anthony's Church, Belleville, following the funeral from the LaMonica Memorial Home, Bloomfield. Interment was in Glendale Cemetery, Bloomfield.

John J. Burke; Was Active In Knights

A Mass for John J. Burke was offered Dec. 20 in St. Mary's Church, Mr. Burke, 83, died Dec. 17 in his Nutley home.

Before retiring in 1966, Mr. Burke worked as a drill press operator for Curtiss Wright Co., Woodbridge. He was employed there for 41 years.

He was a member, advocate and past grand knight of Belleville Council 835, Knights of Columbus. He also was a member of Knights of Columbus Fourth Degree Monsignor Doane General Assembly, the El-Zagel Caravan, International Order of the Alhambra and past chairman of the New Jersey Chapter 1 Knights of Columbus.

Born in Brooklyn, he lived in Belleville before moving to Nutley in 1954.

Surviving are his wife, Evelyn; a daughter, Mrs. Ruth E. Booth; two stepsons, Lawrence and Richard Masters; seven grandchildren and three great-grandchildren. Interment was in Immaculate Conception Cemetery, Montclair.

Mrs. Ferraro Dies at 70

Mrs. Josephine Ferraro, 70, of Belleville died Dec. 8 in the Clara Maass Medical Center, Belleville.

Born Josephine Infinito in Madison, she lived in Newark for 22 years before moving to Belleville in 1974.

Surviving are three sons, Anthony, Ralph and Archie; a daughter, Mrs. Phyllis Bocchino of Belleville; a brother, Joseph Infinito; three sisters, Mrs. Mary Moynihan, Mrs. Dolly Napolitano and Mrs. Louise Alocco, and eight grandchildren.

A Mass was offered in St. Vincent's Church, Madison. Interment was in St. Vincent's Cemetery.

Obituaries

Mass Was Offered For Thomas McEwen

A Mass was offered in St. Agnes Church, Clark, for Thomas C. McEwen, 68, who died Dec. 19 in his home.

Born in Belleville, Mr. McEwen lived in Rahway and Brick for many years before moving to Clark 17 years ago.

Mr. McEwen was the director of manufacturing for the worldwide selling products group of the Singer Manufacturing Co., Elizabeth, where he worked for 39 years before retiring in 1980.

He was a trustee with the Rahway Public Library and past

president of the Second Ward Democratic Club in Rahway. He was a member of the Knights of Columbus 1146 of Rahway and the Singer's Retired Men's Club.

Surviving are his wife, Elizabeth; three daughters, Mrs. Joyce Allmer, Mrs. Kathleen Summerer and Miss Janice; five grandchildren and two great-grandchildren.

L.M. Capozzi; Tool Setter

A Mass was offered in St. Anthony's Church, Belleville, for Louis M. Capozzi, Sr., 76, of Newark, who died Dec. 12 in the Clara Maass Medical Center.

Mr. Capozzi was a tool setter for the Essex Paper Box Co. in Newark for 25 years, retiring in 1963.

Born in Newark, Mr. Capozzi lived in Belleville before moving back to Newark eight years ago.

Surviving are his wife, Frances; three sons, Michael, Frank and Louis, Jr.; three sisters, Mrs. Sue Malanga, Mrs. Stella Pavone and Mrs. Bridget Tobia; nine grandchildren and four great-grandchildren.

Services were held in the Zanol Funeral Home, Bloomfield.

Peter B. Molinaro; Company Founder

Peter B. Molinaro, 79, of Verona died Dec. 10 in the Montclair Community Hospital.

In 1945 Mr. Molinaro started the Montclair Auto Top and Seat Cover Co. Inc. and in 1960 he opened the Branch Brook Auto Top Co., Belleville. He retired in 1970. He was an usher in Our Lady of the Lake Church, Verona.

Born in Newark, he moved to Verona 52 years ago.

Surviving are his wife, Raffaela; a daughter, Mrs. Katherine Wilson; a son, Thomas; six sisters, Mrs. Maggie Maffeo, Mrs. Ida DeSanto, Mrs. Geraldine

Mororello, Mrs. Rose Greb, Mrs. Mafida Luderia and Mrs. Esther Deperdonena; a brother, Joseph; 12 grandchildren and four great-grandchildren.

A Mass was offered in Our Lady of the Lake Church. Interment was in Holy Sepulchre Cemetery, East Orange.

Mario Marra, Caddymaster

Mario Marra, 78, of Belleville died Dec. 4 in the Clara Maass Medical Center, Belleville.

Mr. Marra worked as assistant caddymaster at the Upper Montclair Country Club in Upper Montclair for 23 years until his retirement in 1982. He formerly worked for the General Electric Corp. in Bloomfield.

Born in Newark, he lived most of his life in Belleville.

Surviving are his wife, Jennie; a daughter, Mrs. Ida Havasi; a son, Gerald; four grandchildren and five great-grandchildren.

A Mass was held in St. Peter's Church, Belleville, following the funeral from the Zanol Funeral Home, Bloomfield. Interment was in Conception Cemetery, Upper Montclair.

J.V. Rydelek

Joseph V. Rydelek, 81, of Newark died Dec. 18 in his home.

Mr. Rydelek retired 14 years ago as an inspector for Wallace & Tiernan Co., Belleville, where he worked for 25 years.

Surviving are his wife, Bertha; six sons, Rev. Theodore, Henry, Eugene, Gregory, Christopher and Edward; two daughters, Mrs. Barbara Payton and Miss Joan; a brother, Marceau; two sisters, Mrs. Stella Pawlik and Sister Mariam, and 10 grandchildren.

A Mass was offered in St. Lucy's Church, Newark. Interment was in Holy Cross Cemetery, North Arlington.

Viola Cohen Passes Away

Viola Cohen, 87, of Cedar Grove, died Dec. 9 at Mountain-side Hospital, Glen Ridge.

Born in Rhode Island, she resided in Newark and Hillside before moving to Cedar Grove three years ago. She was a homemaker.

She is survived by two daughters, Shirley Magnus of Belleville; Mitzi Young of Maplewood; five grandchildren and one great-grandchild.

Services were held December 11, 1984, at the Menorah Chapels at Milburn, Vaux Hall Road, Union.

Go ahead. Convince me I should open a Metroplan IRA before January 15th

It's easy. Just take a look at the chart we've put together that shows the difference in earnings 40 years from now, based on the three months you'd lose by starting your IRA in April. \$45,711 is pretty substantial, using a 10.75% CD. Unlike the amount you need to open a Metroplan IRA — which is a very insubstantial \$100.

The amounts shown on the chart are based on our one-year certificate of deposit (10.25% rate yielding 10.95% annually) and three-year certificate of deposit (10.75% rate yielding 11.51% annually).

Young or old, male or female, single or married, there are only two things you need to have an IRA: earned income and to be under 70½. And one very good reason for Metroplaning your future now, instead of later: interest compounded from January 1st, no matter when you open your IRA between now and January 15th.

Still not convinced? Stop by any Metroplan Federal office for more information. And find out just how easy it is to Metroplan your retirement.

RATE: 10.25%				RATE: 10.75%			
DATE ACCOUNT OPENED:		1/1/85	4/15/85	1/1/85		4/15/85	
YEAR:				YEAR:			
15	\$76,041	\$73,822		15	\$79,930	\$77,511	
20	\$141,651	\$137,517		20	\$151,840	\$147,264	
25	\$251,959	\$244,606		25	\$275,822	\$267,547	
30	\$437,416	\$424,649		30	\$489,583	\$474,984	
35	\$749,205	\$727,349		35	\$838,895	\$832,635	
40	\$1,273,415	\$1,236,266		40	\$1,495,117	\$1,449,406	

Totals based on initial and annual deposit of \$2,000 made at same time every year, with constant interest rate over life of account. Actual rates subject to change without notice. Substantial penalties for early withdrawal.

Metropolitan
Federal Savings & Loan
Metrobanking makes it easy.
Member FDIC

JERSEY CITY, Bergen & Montgomery, 333-1525. ABERDEEN, State Hwy. 34 at Lloyd Rd., 583-5252. EDISON TOWNSHIP, Oakwood Plaza Shopping Center, Oak Tree Rd. and Wood Ave., 494-2020. JERSEY CITY, Hudson Shopping Mall, Hwy. 440 and Communipaw Ave., 434-5441. NEW EGYPT, 8 Jacobstown Rd., (609) 758-7372. SOUTH ORANGE, 8 South Orange Ave., 762-9400. BELLEVILLE, 321 Franklin Ave., 759-7000. HARRISON, 335 Harrison Ave., 483-1776. MAIN OFFICE: DENVER, 6 Bloomfield Ave., 625-3200.

Trivia Fans

BET YOU DIDN'T KNOW

Brought to you By Bigelow Motors Chrysler Plymouth

Questions:

1. What peninsula do Spain and Portugal share?
2. What TV club did Janine Fulari host?
3. Who was the first Chancellor of Germany?
4. What has a maiden thought her horse never done?
5. What country declared war on both Germany and the Allies in World War II?
6. How many years before the musical Richard II. Dana wrote about?

I bet you didn't know... that this is the time to save on a new car at Bigelow Motors. We also have a good selection of used cars. Come in and see for yourself.

- Answers:
1. The Iberian Peninsula
 2. The Mickey Mouse Club
 3. Otto von Bismarck
 4. Won a race
 5. Italy
 6. Two

Bigelow Motors
Chrysler Plymouth
50 Washington Ave.
Belleville 759-4220



Sharing the Spirit — Sister Romilda Chiga of the Holy Family Nursery School on Franklin Avenue attracts a crowd of children as she prepares to open the mystery gift package. The gift turned out to be a giant stuffed doll. Making a special visit to the party, just to see the children, were Santa Claus and Mrs. Claus. A holiday musical atmosphere was provided by keyboard player James Vivinetto and students from Holy Family School.

FDA Has Approved Ibuprofen For Sale Without Prescription

By Tariq Mahmood, M.D.

Ibuprofen is an anti-inflammatory drug which, like aspirin, can relieve pain and inflammation. There are other drugs like acetaminophen or propoxyphene (Darvon) which relieve pain without decreasing inflammation.

Over the past few months ibuprofen has been receiving a great deal of attention through both advertisements and articles in magazines and newspapers. This interest has been aroused by the recent action of the Food and Drug Administration in approving the sale of the ibuprofen without prescription.

For the past 10 years the drug has been sold by prescription under the names of Motrin and Rufen, with more than 100 million prescriptions having been written by U.S. doctors, mostly for relief of arthritis pain. Now that the drug is available for over-the-counter (OTC) use in low dose non-prescription strength (200 mg.) two pharmaceutical companies have developed preparations containing ibuprofen — Advil and Nuprin.

Chemically, ibuprofen is a compound different from aspirin or acetaminophen (the active ingredient in Tylenol), and when taken by mouth is rapidly ab-

sorbed by the body.

The gastrointestinal upsets, allergies and internal bleeding that can be caused by aspirin have all been well documented over its many years of use. Ibuprofen is less likely to cause gastrointestinal distress than aspirin, but in some people nausea, stomach pain, heartburn, peptic ulcers, and gastrointestinal bleeding can occur, as can exacerbation of a pre-existing ulcer. The drug should not be used in patients with an active ulcer. Gastrointestinal irritation can be decreased if the drug is taken with food or an antacid.

Ibuprofen should not be taken by anyone who has an established sensitivity to aspirin (for example, asthma, swelling or shock) because even though it contains no aspirin, cross-reactions may occur in patients allergic to aspirin. Additionally, it should not be taken by children under the age of 12, by pregnant or nursing women, unless under the supervision of a physician. This is also true of patients with kidney disease, heart failure, or a blood clotting problem. Like many other drugs there are other possible side effects including dizziness, headaches and skin rashes.

Although the major side effects or reactions to ibuprofen

have not been seen in large numbers of patients, now that the drug is available over-the-counter and consumers will be medicating themselves without being monitored by a physician, there is concern among many medical professionals that there will be many more adverse reactions and that the package and product labeling of these two new products (Advil and Nuprin) may be inadequate to protect many people from the hazards of its inappropriate use.

Fever and pain are both protective mechanisms of the body, and to mask either by excessive use of any drug does not treat the underlying cause and may incur more problems in the patient.

As with most of the drugs, when ibuprofen is taken along with some other medication there is, depending upon the type of medication, a possibility of drug interactions resulting in significant side effects.

Few people seem to experience gastric side effects with acetaminophen — nor does it promote fluid retention and bleeding — as can aspirin and ibuprofen. And with these considerations in mind, with my own patients, I prefer to prescribe acetaminophen for the relief of pain. If they do not experience relief or there is associated inflammation, I would recommend aspirin for those who do not have a history of allergic reaction or significant side effects. If however, the patient cannot take aspirin, I then recommend ibuprofen or a similar drug.

As with any medicine, read and follow label directions and take only when needed. If you have any questions about the use or safety of any drug, contact your physician or pharmacist.

(Editor's Note: Dr. Mahmood is assistant professor of medicine at the University of Medicine and Dentistry of New Jersey-New Jersey Medical School and director of the Arthritis Clinic at UMDNJ-University Hospital, Newark. He lives in Essex County.)

Legion Post Sponsors Party

American Legion Post 105 of Belleville gave a Christmas party Dec. 18 at the East Orange Veterans Hospital for hospitalized veterans.

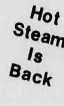
The party was hosted by Harry Tuck, Post 105 commander. The members of Post 105 took up six

boxes of wrapped Christmas presents and distributed 100 Canteen books so that the veterans could purchase items from the commissary.

Guitar music was provided by Fran Dexter and Mary Lou. The women of Post 105 baked

cookies and cakes and Gino's Pizzeria of Belleville donated 15 pies. In attendance were Post 105 members and members of the Belleville Chamber of Commerce who distributed gifts donated by the township's merchants.

KEEP YOUR CAR ON A SALT FREE DIET



We're The Best BRUSHLESS CARWASH OR YOUR MONEY BACK

- Interior Vacuum & Perfect Windows **FREE**
- Polish Wax — Car Polished Automatically (Reg. \$3.00 Extra) **FREE**
- Underwash — Flushes & Protects Undercarriage (Reg. \$1.50 Extra) **FREE**
- Steam Bath — Bumpers, Lower Panels, Chrome, Whitewalls & Hub Caps Steam Cleaned **FREE**

\$6¹⁴
+ tax
(No extra charges)

TIP-TOP CAR WASH

485 Ridge Rd. No. Arlington, N.J. 991-3629

Use Belleville Pike to Ridge Rd. Turn left to Tip-Top
Open 7 Days A Week - Sunday Til 1:30 P.M.

Look Good - Feel Good
BE A WINNER
Try a muscle toning and aerobic workout that works!

Franklin Reformed Church
Hillside Crescent, Nutley
Starts Jan. 7
Evening - 8 p.m. to 9 p.m.
Saturday morning - 9 a.m. to 10 a.m.

Italian American Club
624 Franklin Avenue, Nutley
Starts Jan. 8
8 Weeks \$50
Mornings - Babysitter Available
Bring This Ad & Get 1st Class Free

Contact Laura 661-0382 or Paula 661-0371 For Information

HAPPY NEW YEAR • HAPPY NEW YEAR • HAPPY NEW YEAR •

THERE'S NO PLACE LIKE HOME PLAN NOW TO SPEND YOUR NEW YEAR'S EVE

AT

PROUD MARY'S

SPECIAL MENU PARTY FAVORS

Plus
Friendly Service



Seating starting at 5 p.m.

R.S.V.P.
429-9246

HAPPY NEW YEAR • HAPPY NEW YEAR • HAPPY NEW YEAR •

ANNUAL WINTER SALE 25% to 66% off our very best in all our departments:

SUITS AND DRESSES, COATS, JACKETS and FURS, ACCESSORIES and HANDBAGS, BRAS, GIRDLES and LINGERIE, MATERNITY and CHILDREN'S WORLD



AND EVERY SIZE CATEGORY:
JUNIORS, MISSY, PRETEENS, MISSEY PETITE, LARGE SIZES, MATERNITY, CHILDREN and INFANTS.

Open Daily 10-5:45, Late Mon. & Fri. till 9
Sat. till 5:30

Since 1904
(the uncommittal shopping place)

Janette Nutley Center
Nutley Center, Nutley • 667-1900
(Convenient rear entrance at Parking Plaza.)

JNC & JNC The Men's Store charges accepted, as well as all other major charges

Hundreds of Specials are in the Holiday Edition of the Price Finder for Specials this Week! Now at your Grand Union.

Holly Farms - Grade 'A' Fresh
Roasting Chicken
5 to 6 Lbs. **67¢**
Lb.

Pasteurized Sour Cream
Breakstone
1-Lb. Cont. **89¢**

Western - Andy Boy
Fresh Broccoli
Large Head Each **89¢**

Pure
Wesson Oil
1-Gal. Cont. **4.99**

Grand Union Price Finder for Specials



Contains All the Specials in the Store.
Look for the Red Dots on the Shelf.

Open Sunday until 9 P.M.
We're Closing Christmas Eve
MONDAY, at 6 P.M.
and wish you all a
Merry Christmas
CLOSED CHRISTMAS DAY

Super GRAND UNION Coupon
Assorted Flavors
Hawaiian Punch
One 1-Qt., 14-oz. Can **39¢**
No Minimum Purchase Required With This Coupon.
Good Dec. 23 Thru Dec. 29. Limit One Coupon Per Customer.

Super GRAND UNION Coupon
Buy One Get One FREE!
Get One 1-Ltr. Btl. - Club, Tonic, Seltzer or Seagram's Ginger Ale
When you buy one 1-liter btl. Seagram's Mixers at our regular low price.
No Minimum Purchase Required With This Coupon.
Good Dec. 23 Thru Dec. 29. Limit One Coupon Per Customer.

Imported - Kjeldsen's
Butter Cookies
1-Lb. Tin **2.69**

Buy One Get One FREE!
Get One Pkg. of 20 - Medium Reg. or Deod.
Glad Garbage Bags
When you buy one pkg. of 20 Glad Garbage Bags at our regular low price.

THE BUTCHER BLOCK

Frozen - Non-Basted
Land O Lakes Grade 'A' Turkeys
18 to 22 Lbs. **89¢**
Lb.

Turkey - Swift - Butterball - Grade 'A' Frozen **1.09**
18 to 22 Lbs. Lb. **89¢**
Turkeys - Land O Lakes - Grade 'A' Basted **95¢**
Frozen 18 to 22 Lbs. 10 to 14 Lbs. Lb. **89¢**
Duckling - Maple Leaf - Farms - Fresh **1.09**
Grade A - or Frozen w/ 4 oz. of Orange Sauce Lb.
Turkey - Shenandoah Hotel - White/Park Meat **2.99**
Frozen - All White Meat **2.39** 2-Lb. Pkg.
Fresh Ham **1.39**
Fresh Western Pork - Whole or Shank Half Lb.

Family Pack Savings
SAVE 10¢ A LB. ON PKGS. OF 3 LBS. OR MORE

Chicken - Holly Farms - Combo - Grade 'A' Fresh **1.17**
3 breasts split with ribs 3 drums 3 thighs Ea. Lb.
Pork Chops **1.39**
Combo - Loin Rib End & Center Cut Ea. Lb.
Chicken Wings **69¢**
Fresh - Grade A Ea. Lb.

THE CORNER DELI
IN STORES WITH SERVICE DELI

Hard Salami **1.79**
Margherita - Quality Half Lb.
Potato Salad **67¢**
Made With Hellmann's Mayonnaise
Swiss Cheese **1.89**
Finlandia Half Lb.

PRODUCE

Grade 'A'
Louis Rich Fresh Turkeys
18 to 22 Lbs. **99¢**
Lb.

Smoked Ham - Shank End **99¢**
Fully Cooked Water Added - Some Slices Removed Lb.
Smoked Ham - Butt End **1.19**
Fully Cooked Water Added - Some Slices Removed Lb.
Fruited Ham **1.99**
Gwaltney - Fully Cooked Lb.
WHOLESALE SAVINGS
Top Round Whole **1.89**
U.S.D.A. Choice - Boneless Beef 16 to 22 Lbs. Untrimmed Cry-O-Vac Custom Cut

THE BIG FREEZER

Cavatelli **79¢**
Calentano - Macaroni 1-Lb. Pkg.
Cheese Pizza **99¢**
Tree Tavern 10-oz. Pkg.
Asparagus Spears **2.33**
Seabrook - Jumbo 10-oz. Pkg.

GROCERIES

Washington State
Red or Golden Delicious Apple
U.S. No. 1 2 1/4" Min. **59¢**
Lb.

Yellow Onions **79¢**
U.S. No. 1 3-Lb. Bag
Oranges **5.99**
Florida Juice For Large 80 Size
Romaine Lettuce **49¢**
Fresh Crisp Lb.
Avocados **2.99**
Florida or California For Large Size
Fresh Bok Choy **39¢**
Crisp and Tender Napa Lb.

DATE-LINE DAIRY

Mt. Dew or Pepsi Light or Regular or Diet
Pepsi-Cola or Pepsi-Free **99¢**
2-Liter Btl.
Lasagna - San Giorgio **69¢**
Curly Edge 1-Lb. Pkg.
Nabisco - Snack Crackers **99¢**
Assorted Varieties 7 to 9-oz. Pkgs.
Ritz Crackers **1.29**
Nabisco - Original 1-Lb. Pkg.
Bold 3 Detergent **1.99**
For Laundry - w/fabric Softener 3-Lb. 1-oz. Pkg.
Kitchen Bags **1.79**
Glad - Large Pkg. of 20

HEALTH & BEAUTY

Assorted Regular Varieties
Wise Potato Chips **99¢**
6 1/2-oz. Bag
Apple Juice **1.29**
Mott's - Regular or Natural Half Gal. Btl.
Cranberry Sauce **49¢**
Ocean Spray - Whole or Jellied 1-Lb. Can
Sanka Coffee **2.99**
Decaffeinated - ADC or Elec. Perk 13-oz. Can
RC Cola - or Diet Rite - or Park or Reg. or Sugar Free RC100 **1.79**
12-oz. Cans
Ken-L Ration Dog Food **1.79**
6-Pack - Orig. Beef, Chicken 15-oz. Cans

GRAND UNION Coupon
40¢ Off
(757) With This Coupon And Purchase Of One Half Gal. Cont. - Assorted Flavors
Louis Sherry Ice Cream
Coupon Good Dec. 23 Thru Dec. 29
Limit One Coupon Per Customer

GRAND UNION Coupon
20¢ Off
(755) With This Coupon And Purchase Of One Pkg. of 360 - White or Colors
Marcal Paper Napkins
Coupon Good Dec. 23 Thru Dec. 29
Limit One Coupon Per Customer

GRAND UNION Coupon
30¢ Off
(756) With This Coupon And Purchase Of One 1-Lb. Can - 100% Colombian
Brown Gold Coffee
Coupon Good Dec. 23 Thru Dec. 29
Limit One Coupon Per Customer

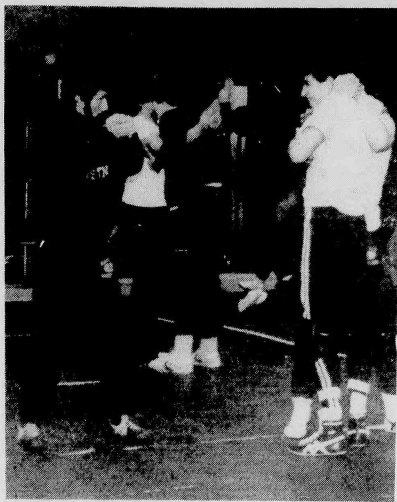
Always in Good Taste...
GRAND UNION GIFT CERTIFICATES
Available in \$10 and \$20 denominations at the Courtesy Booth

Prices effective Sunday, Dec. 23 through Saturday, Dec. 29 at all Grand Union stores in New Jersey, Rockland and Orange Counties. In order to assure a sufficient quantity of sale items for all our customers, we reserve the right to limit sales to 3 packages of any item unless otherwise noted. Not responsible for typographical errors. For store information call toll free 1-800-221-1835.

Main Street, Belleville; 505 Allwood Rd., Clifton; 710 Bloomfield Ave., Glen Ridge

GRAND UNION MOST GRAND UNIONS ARE OPEN 24 HOURS
Check your local Grand Union for store hours.

Belleville Times SPORTS



Technique — Freshman wrestling coach Dennis Villano gives instruction during a practice session. The Buccaneer wrestling team, 1-0 in dual matches, will take part in the Bloomfield Holiday Tournament starting Saturday morning.

Varsity Wrestling Season Opens With Big Victory

By Mike Lamberti

Showing the ability to strike quickly, the Belleville wrestling team romped past a strong Bergen Catholic squad, 46-10, and posted its first dual match victory of the season.

Belleville, now 1-0, will take part in the Bloomfield Holiday Tournament, to be held at Bloomfield High School this Saturday, starting at 10 a.m.

"I was surprised with the outcome," said head coach Gene D'Alessandro. "Last year, we had to go to the heavyweight slot before we beat them. This season, we started quickly. This team has the ability to pin, but does not get pinned. We put it all together tonight, but maybe tomorrow night, the results wouldn't be the same."

Belleville started quickly, posting pins in the 101 and 108 pound class. Freshman Joe Cerreto and sophomore Tim Buckley both posted victories by way of

pin in the first period. Cerreto, who won the county crown two weeks ago at Belleville, appears to be off to a very strong start. Buckley, a returning varsity competitor, is showing constant improvement.

Dino DiGregorio was defeated in a close match at 115 by a score of 13-9. Senior Dominick Cerreto came back at 122 pounds with a pin to give Belleville an 18-3 lead. Cerreto's work at 122 was quick, with the fall coming in the first round.

At 129 pounds, Vin Padula was sidelined due to illness and freshman Mondo Nardone stepped in. The frosh was more than impressive, winning a good match by an 8-4 count and extending Belleville's lead to 21-3.

Bergen Catholic tallied four points in the 135-pound category when Buccaneer Mike Iacona was defeated, 10-2. Senior Cam

(Please see 'Buc' on page 12)

Season Record Now 0-4

Boys' Varsity Loses; Prepares for Tourney

Their record is 0-4 and the head coach sees plenty of work ahead, but deep inside, there is the feeling that something good is happening with the Belleville boys' basketball team.

The Bucs lost two games last week, bowing to Bloomfield, 41-28, and Paterson Eastside, 59-42, but head coach Rocco Colucci is not writing this season off. Not by a long shot.

"Since the Bergen Catholic game," Colucci said, "we've been playing pretty well. There's still a long way to go, but I'm happy with the kids' intensity and desire. We're up against some good teams and we're playing hard."

Indeed, Belleville has seen its share of difficult opponents. The team opened with the debacle against Bergen Catholic, then traveled to Wood-Ridge the following evening to face one of the better Group I teams in North Jersey.

Last week, Belleville went to Bloomfield, where it faced a powerful Group IV school that features a 6'10" center. Then, the team returned home to battle Paterson Eastside, always a good team with a solid nucleus.

"It doesn't get easier, either," Colucci said. "Look at our schedule in January and you'll see that."

The January slate begins with a road game against Montclair on Jan. 3, starting at 4 p.m. Then, it's off to Don Bosco for a 7:30 p.m. tip off Jan. 8. The Bucs travel to Clifton Jan. 10 and host Passaic Jan. 12.

Before that January schedule, Belleville will celebrate the holidays by competing in the West Morris Christmas Tournament, to be held at West Morris and Morris Knolls. The first round opponent will be Morris Knolls, a game that was held last night. The Bucs will play today, either at 5:30 p.m. or 7 p.m. from Morris Knolls High School. If Belleville wins, it will play the winner of

Hoboken-Morris Hills, while if it loses, the opponent will be the loser of the Hoboken game, starting at 5:30 p.m.

Last week, the Bucs played a fine defensive game, but lost by 13 to Bloomfield. "We couldn't put the ball in the hole," Colucci said. "We're trying to hold them under 52 points a game. I feel if we do that, we should be in most of our games."

Belleville did its part on the defense, but couldn't capitalize on the other end, scoring just 28 points.

In the Paterson Eastside game, Belleville played a strong contest against a traditionally strong rival. "From the start of the game, we played with a lot of heart and intensity," Colucci said. "Take nothing away from our kids, they did a nice job. I'm proud of their effort, we have been stressing pride and intensity. The seniors are stressing it to the younger players and the varsity players are stressing it to the jayvee players."

The Bucs trailed, 17-12 after one quarter and 32-19 at halftime. The two teams tied at 10 for the third quarter and Eastside outscored Belleville, 17-13 in the final frame to win by 17 points. Two freshmen, Leon Puentes and Ted Sochaski led the way for Belleville with 13 and eight points respectively. Junior Donald Washington had six points for the Bucs.

Rebounding wise, the Bucs responded with vigor. Senior Mike Sochaski had nine boards. Washington tallied seven and Steve Kimble, a senior, finished with six.

It is not going to come easy for the 1984-85 Belleville Buccaneers. The schedule will be competitive to say the least and the team will mature with experience. One thing seems for sure, however, and it's that this team will not take a back seat to anyone. Pride and intensity; it seems to have a special meaning for these athletes.



Let It Fly — Buccaneer basketball player Steve Kimble lets loose with a jump shot during last week's contest with Paterson Eastside. The Bucs played a gutsy game but lost, 59-42.

Local Turns NJIT's Team Into Basketball Winners

For Jim Catalano of Belleville to come in and turn a program's fortunes around so dramatically, he must have done something right. What Catalano did was take New Jersey Institute of Technology's basketball team which had won three games the previous season and turn it into a 21-5 club during the 1979-80 season.

Over five seasons and the early part of the sixth, he has compiled a record of 97-38. He needs three triumphs for his 100th victory which could come as soon as Jan. 4 against New York Poly provided NJIT wins Upsala's Yule Cup Classic Dec. 28-29.

Going into the season, Catalano's record of 97-37 gave

him a .710 winning percentage and placed him ninth among all active coaches in NCAA Division 3.

Winning the Yule Cup Classic would be a positive step in the NCAA Tournament direction for the 5-1 Highlanders who have lost only to a strong Trenton State team, 66-64. NJIT meets Montclair State in the Yule Cup opener at 6 p.m. Dec. 28.

Catalano's coaching philosophy begins and ends with fundamentals. "Success might not always be measured in wins and losses in basketball, unless the talent is so lopsided against you, if you're completely fundamentally sound, you'll win."

michael lamberti's BUC SHOTS

Surprising Predictions Offered for New Year

I don't know about you, but these past 12 months seemed to whiz by for me. There was a lot of excitement and the usual surprises. Here in Belleville, another excellent season was turned in by our athletes on the varsity, junior varsity and freshman level. Certainly, the young men and women will be looking to improve on their accomplishments in 1985.

Traditionally, we end the year on a light note, giving predictions of the next 12 months. Certainly half of these instances will never become reality, but it's the holiday season, so why not have some fun. Here is a look at the year 1985 in the Belleville sports area.

Jan. 5 — Vowing not to cause any turmoil this year, Belleville basketball owner George Zanfini and manager Ralph La Conte do a beer commercial. Everyone in the listening audience gets a big kick out of the commercial as La Conte and Zanfini stage a mock argument. "Tastes great," said La Conte. "Less filling," says Zanfini. The plot ends with Zanfini firing La Conte. Everyone laughs because last year, Zanfini fired La Conte three times.

Jan. 14 — center Donna Brooks of the girls basketball team is called for three goal tending violations and is assessed two technical fouls for hanging on the rim. Her team wins anyway.

Jan. 21 — Zanfini fires La Conte for getting carried away on the beer commercial. Zanfini replaces La Conte with himself.

Feb. 4 — Belleville A.D. Jim Silvestri, tired of Zanfini firing La Conte, refuses to allow Zanfini a return

to the diamond. Zanfini reluctantly reinstates La Conte.

Feb. 17 — The Belleville Suburban Basketball team, under coach Joe Papisidero, advances to the playoffs. Papisidero, in his flashy style, calls CBS-TV and asks for national coverage of the playoffs.

Feb. 28 — Only 51 more days before Mike Lamberti gets married (Gulp).

March 15 — Desiree Johansen is named spokeswoman for the Cabbage Patch doll product and will go on tour starting in the summer.

March 24 — Only two weeks before the baseball season starts at Belleville High and La Conte is quickly preparing his team. The Bucs of 1984 were 16-9-2, the best record since 1981.

April 1 — Karen Fucello, girls basketball coach, is in stable condition at a local hospital after finding out that three high school triplet girls, all of which are 6'4", do not like basketball and will compete for the bowling team instead.

April 10 — Only ten more days before Mike Lamberti gets married (Help).

April 17 — The Belleville baseball team wins its second straight game, but trouble is brewing. La Conte supposedly had a run in with Belleville Times reporter Michelle Jeannotte. Zanfini wants an answer to this and will fire La Conte if the allegation is true.

April 20 — Despite 8-5 odds that said it would never happen, Mike Lamberti gets married. Las Vegas odds

makers are stunned.

April 30 — Jeannotte and La Conte reconcile their differences and Zanfini promises to forget the incident. The baseball team is flying high and the owner doesn't want to interfere.

May 7 — At William Paterson College graduating ceremonies, Michelle Jeannotte is named Phi Beta Kappa. She is offered a lucrative position with Sports Illustrated, but turns down the deal, saying, "My work at the Belleville Times isn't finished yet. I can't leave now."

May 17 — Rumors persist that Zanfini will buy the girls' softball team, but not give any hassles to his long time buddy, Carl Corino. "Carl is the coach," Zanfini says. "I'm not hanging anything."

June 1 — Mike Lamberti is still married.

June 2 — John Jurich and David Vaughn deny rumors that they will return to local television as co anchors of the 5 p.m. news.

June 19 — Graduation ceremonies at Belleville High School and Linda Wujcik announces that she will return to Belleville High for one more season of gymnastics under coach Ray Iannuzzi.

June 27 — Zanfini finalizes the papers that make him the owner of the Belleville softball team as well. At a meeting with coaches Corino and La Conte, Zanfini fires yet one more man from their post and reinstates them to the other position. Corino is outraged by the incident and vows a sit-in next March if the situation isn't settled.

Aug. 17 — The Belleville football team begins practice for the 1985 season.

Sept. 4 — Zanfini renames Corino the coach of the softball team and promises peace throughout the rest of the year.

Sept. 27 — The Belleville football team, despite losing 26 seniors to graduation last spring, defeats Don Bosco, 14-7. Jim Dunphy scores both Belleville touchdowns.

Oct. 14 — During a football game with Paterson Eastside, Belleville punter Dave Long booms a punt from his own 20 that lands on Greylock Parkway. No injuries were reported.

October 28 — Football widow Camela Seneky shouts her infamy cry "There's more to life than just football!" following a tough Belleville loss.

Nov. 16 — Rocco Colucci returns for his second season as Belleville basketball coach. Karen Fucello resigns her post as girls' coach and Joe Papisidero takes the position. Colucci and Papisidero, now back together in coaching, promise a repeat act of their "homeymooners" performance.

Nov. 26 — Belleville wrestler Mike Gibbons, who pinned all his opponents in his senior year, pins himself during a workout with the team. Gibbons was one of the best wrestlers in the State during the 1984-85 season.

Dec. 7 — Jennifer Apicella, now a sophomore at Holy Cross, scores 42 points as her team stops Boston College.

Dec. 21 — Dana Caruso wins a marathon in Philadelphia, then is so ex-



cited about her fast that she runs home.

Dec. 30 — Another year of sports comes to an end at Belleville High, and yes, Mike Lamberti is still married (Editor's note: Poor Carol!).

Dec. 31 — John Jurich and Dave Vaughn will not return to the Nutley paper. Have a great New Year.

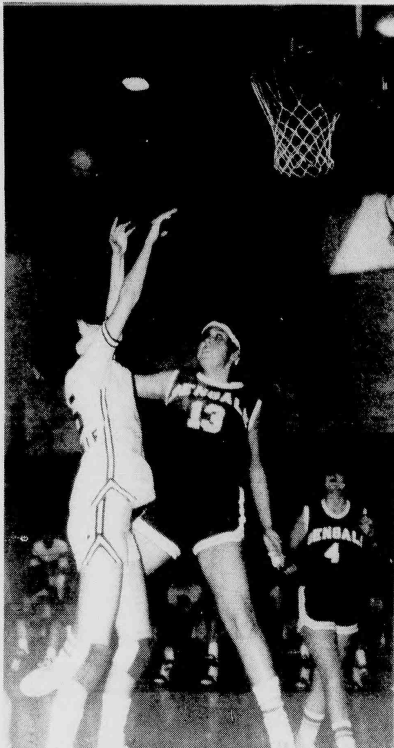
I would like to take this time to wish everyone a fine 1985. All kidding aside, I hope that our young athletes and coaches will have a prosperous New Year and that everyone in Belleville and throughout the area enjoys success and prosperity in the new year.

The Belleville High School athlete of the month for December will be profiled in next week's issue.

The Belleville High School athlete of the week is Michael Gibbons of the wrestling team. The senior is off to a fantastic start this season, having won the Essex County tournament and a dual match against Bergen Catholic.

The answer to last week's quiz: The question was when was the last time the Pittsburgh Steelers defeated the L.A. Raiders before last weekend. The answer: The Steelers last won in 1975, 16-10, in AFC championship game.

For this week's quiz, name the participants in the 1979 AFC and NFC wildcard games and the final scores. Also, name the coaches of the respective teams.



Jump Shot — Buccaneer Sheri Phelps attempts a jump shot during last Tuesday's battle with the Bloomfield Bengals. Phelps, a junior, is being counted on to score some big points for this year's varsity team.

Fundraising Campaign For Hospital Continues

Mountainside Hospital Montclair-Glen Ridge Second Century Building Campaign has reached the midway point of the \$10 million fundraising goal. The building program focuses on the need to replace 235 beds which are housed in portions of the hospital that are up to 70 years old.

Broad hospital family and community support has been evident. Coupled with this and the addition of two generous bequests, Mountainside has raised pledges amounting to more than \$5.4 million.

Sponsors of the Second Century Building Campaign who have endorsed the building program include: Richard J. Bonal, Joseph A. Courter, Alfred R. Dardis, M.D., John W. Hannan, Harold H. Helm, Mrs. R. Lounsbury, John J. McMullen, Joseph A. Sullivan, Sr., Josh A. Weston, and John C. Whitehead. Mrs. A. C. Sawdile, Jr. serves as Honorary Leadership Gifts Chairman.

Corporate leadership gifts

have recently been received from Union Camp Corporation, ADP, PSE and G and Essex Chemical Corporation. The building project has also passed the rigorous review process of the Greater Newark Capital Campaign Review Committee and received their stamp of approval.

"The momentum is there," Becky A. Jones, co-chairman of the Second Building Campaign, stated. "The community recognizes that this is essential, well-planned, no-frills project and is getting behind it 100 percent to lend their support," added Robert M. Ferns, co-chairman of the Campaign.

Kent V. Faulkner, trustee and chairman of the Development/Community Relations Committee urges, "my members of the 18 towns served by Mountainside Hospital, who have not been approached for their support, are encouraged to contact our Campaign Office at 429-6130 for details.

Girls' Basketball Team Loses Two; Bengals Too Tough for Buccaneers

The Belleville girls' basketball team is finding things rough in the early going. The Lady Buccaneers were romped by Bloomfield, 48-23 last week and fell to 0-2 on the season.

Karen Fucello's team started play in the first annual Lady Buccaneer Classic, held last night at Belleville High School. The first round opponent was Moore Catholic of Staten Island.

Hanover Park and Becton was the other first round matchup. Tomorrow night, the championship and consolation games of the tourney will be held at BHS. The consolation game starts at 6:30 p.m., the championship game at 8.

Against Bloomfield, Belleville had a case of turning over the ball too much. "When you turn the ball over 13 times in the first half

alone, with no pressure, you're going to have problems," Fucello said. "If we could have scored on half of our possessions in the first half, that's 14 points. Also, we have to find someone who can stick the ball offensively. We're not shooting the ball well from the foul line, either."

Belleville received little offensive help from the starting lineup, a statistic that will have to change should Belleville entertain hopes of turning it around as the season progresses.

"It wasn't one of our better games," Fucello said in a classic understatement. "We made too

many mistakes and against a good team like Bloomfield, you're in trouble."

The girls were hoping for a better showing against Moore Catholic last night and hoped to carry any new found momentum into the championship game tomorrow evening.

"I wish we could have played one more game heading into the tournament," Fucello said. "We played last Tuesday (against Bloomfield) and then don't play again until the following Wednesday. That's too much time to have off if you hope to develop some continuity."

Buc Wrestlers Win; Enter Tourney Play

(Continued from page 11) Rispoli got some of the points back at 141 when he posted a 12-2 win. The victory reaffirmed Belleville's lead at 24-7.

Senior Ralph Zarro continued the Belleville onslaught at 148 with a first round pin. Sam Zamioot wasn't as fortunate at 158 pounds as he suffered a four point loss, cutting Belleville's lead to 30-11.

Sean Mulcahey got the job done at 170 pounds as the junior was an easy 21-2 victor. At 188 pounds, resident strongman Michael Gibbons got off to a "slow" start, then pinned his man late in the first round, giving Belleville a commanding 40-11 lead and making the heavyweight bout a formality.

Heavyweight Marc Criscione finished matters with a first period pin, giving Belleville a 46-11 lead. 46-10 after Bergen Catholic lost a point for unsportsmanlike conduct.

D'Alessandro was very pleased with the effort of his team. A couple of his wrestlers are going at a heavier weight class and the coach foresees some changes for the Bloomfield Holiday Tournament. Dominick Cerreto could move to 115, Cam Rispoli might move to 135, Iacona could switch to 129 and Luke Silletti, the teams tarter at 141 last year, is looking

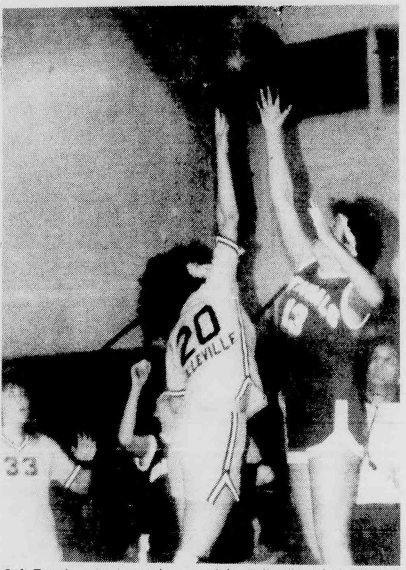
to return following a knee injury. "With Luke, it's just a matter of the doctor giving the okay," said D'Alessandro. "He is raring to go and seems to be doing good."

D'Alessandro is looking for a good performance at the Bloomfield tourney. His teams have not done especially well there in recent years and a strong effort in Bloomfield will put the team in good position for the difficult matches coming up in January.

BHS Alumni Will Meet Next Week

The Belleville High School Guidance Department will host its annual alumni reception Jan. 4, 2:35 p.m. in the high school cafeteria.

Former graduates who are home for the holiday will have an opportunity to revisit the high school, a particular invitation being given to the Class of 1984. The reception has a dual purpose. It affords the department an opportunity to interview last year's graduates and to obtain follow-up information. At the same time, last year's graduates have one last opportunity to meet their friends again in school.



Soft Touch — Desiree Johansen of the Belleville girls' basketball team tries to lay one over a jumping Bengal defender. Belleville lost this game and will try for its first win in the Lady Buccaneer Holiday classic which began Dec. 26.

Story Time Begins In Two Weeks

Registration for the Belleville Public Library's winter series of Preschool Story Times is now being conducted in the children's room at 221 Washington Ave.

One session will meet Tuesdays, beginning Jan. 8 through March 12. Another session will meet Thursdays, beginning Jan. 10 through March 14. Each session runs from 10-11 a.m.

The program is open to all Belleville 3-and 4-year-olds. Because group size is limited, advance registration is required. Interested parents should call the library at 759-9200.

White Eagle Manor

*** Proudly Presents ***

NEW YEAR'S EVE PARTY

Monday, December 31st - 10pm to 3am

- Open Bar • Hot and Cold Buffet Style Dinner
- Noisemakers & Hats
- Entertainment by "THE OZ"

BOTTLE OF CHAMPAGNE PER TABLE AT MIDNIGHT

WEDDINGS

\$20 PER PERSON

SERVED INDIVIDUALLY OR FAMILY STYLE
CHAMPAGNE TOAST & WEDDING CAKE INCLUDED.
3 HOUR UNLIMITED BAR

LIVE ENTERTAINMENT

IN OUR COCKTAIL LOUNGE

EVERY FRIDAY AND SATURDAY EVENING

41 BROUGHTON AVE., BLOOMFIELD
CALL NOW FOR RESERVATIONS 748-6590 • OPEN TO THE PUBLIC

Winter "CLEARANCE"

PRE-SEASON SALE!!

- Honda quality throughout.
- Rugged, dependable Honda 5 HP 4-stroke engine provides greater snow blowing ability.
- Honda Automatic Compression easy start system makes engine starting quick and reliable.
- Self-propelled for easy maneuverability even through hard packed snow.
- Choice of wheel or track drive system.
- 220" adjustable discharge chute allows snow throwing in almost any direction.

- Honda quality throughout.
- Rugged, dependable Honda 3.5 HP 4-stroke engine has plenty of power.
- Semi self-propelled.
- 220" adjustable discharge chute allows snow throwing in almost any direction.
- Adjustable snow deflector throws 3 to 20'.

HONDA Power Equipment

For optimum performance and safety we recommend that you read the owner's manual before operating the unit. © 1984 American Honda Motor Co., Inc.

The Motorcycle Mall

165 WASHINGTON AVE. BELLEVILLE
751-4545
751-7727

BILL TONEY'S

Hot & Cold Catering
For Large Or Small Parties
All Cooking On Premises
Featuring Our Old World Italian Recipes

WE DELIVER

667-4877

95 Harrison St., Nutley 7 a.m. - 8 p.m.

Happy Holidays

118 Franklin Ave. Nutley, N.J.
661-4333 661-4306

CARMINE'S PUB & RESTAURANT

ALL YOU CAN EAT

- Mon.- Mussels\$2.00
- Tues.- Spaghetti.....\$2.00
- Wed.- Calamari.....\$3.00
- Thurs.- Mussels.....\$2.00
- Fri.- Popcorn Shrimp..\$3.00
- Sat. Special - 1 Doz. Steamers or Clams on 1/2 Shell Only \$3.75

Thurs. Ladies Night Drinks 1/2 Price

Come to Our New Year's Eve Celebration with entertainer Vince Mazzi

Dinner Special
Lobster Fra Diabolo (served with spaghetti) \$6.75

Luncheon Specials
Daily 11:30-3:00
\$1.95 - \$3.95

A Happy New Year to All

Let 1985 abound with joy, as we thank all our customers for their friendship and support.

NEW YEAR'S RESOLUTIONS

To enjoy peace and love in '85!

Dr. & Mrs. M. Credico,
Children and Staff
**WISHES ALL OF OUR PATIENTS,
FAMILY & FRIENDS A HAPPY
& HEALTHY HOLIDAY SEASON**

In lieu of Christmas cards this year a Christmas donation will be made in your names to: Boy Scout Troup #38 of Newark, N.J.

Dr. Michael Credico
227 Watchung Ave. Bloomfield

Sandy Lane Nursery School

PRESCHOOL
DAY CARE
KINDERGARTEN

634 Mill Street
Belleville
751-6380

Hours 7:30-5:45

May the joy and warmth of Christmas abide with you all through the season. And may peace be in your hearts always.



FRADE'S DELI & CATERERS

327 UNION AVENUE
BELLEVILLE, N.J.

CATERING FOR ALL OCCASIONS
HOMEMADE SALADS PARTY PLATTERS
ITALIAN SPECIALTIES
759-3509

Bob Drummond, INC.

TV SERVICE
667-0068

The Best of '85

ARTHUR L. GRUTT, REALTOR

**GLENWOOD
REAL ESTATE AGENCY**
905 Broad St., Bloomfield, N.J. 429-7380

Heralding
in the New Year

NUTLEY JEWELERS
218 FRANKLIN AVENUE
NUTLEY, N.J.
667-3296

New Year Greetings

PHILIP J. SCRIFAGNANO, ESQ.
249 FRANKLIN AVENUE, NUTLEY, N.J.
667-1155

happy new year

Give it your Best

Another grand New Year is zooming in, along with our hopes that it fulfills all your dreams

TRA PAR, INC.

10 MAIN AVENUE
CLIFTON (NUTLEY LINE), N.J.
667-4141 779-7941

Transmission Specialists.
Over 35 Years Experience



New Year

**WINDHEIM
PLUMBING &
HEATING
COMPANY**

418-20 FRANKLIN AVE.
667-6886

FASHION EYEWEAR INC.

334 FRANKLIN AVENUE
BELLEVILLE, N.J.
759-6252



nts

201-235-1234
212-227-0988

NUTLEY TRAVEL SERVICE

800 BLOOMFIELD AVE., NUTLEY, N.J.
SPECIALIZING IN GROUP MOVEMENTS, CORPORATE ACCOUNTS, AIRLINE, STEAMSHIP, INDEPENDENT TOURS, PACKAGES, HOTEL & RAIL RESERVATIONS.
CARMEN A. ORECHIO EST. 1949



SALLY'S AUTO PARTS, INC.

75 FRANKLIN AVE.
NUTLEY, N.J.

667-8300



BLUE RIBBON WALL PAPER INC.

553 FRANKLIN AVE.
NUTLEY, N.J.
667-2727



CHARLES JEWELERS

163 WASHINGTON AVENUE
BELLEVILLE
759-2468

JEWELRY-WATCHES-DIAMONDS-GALORE
JEWELRY MAKING ON PREMISES
ALSO CUSTOM MADE NAME PLATES MADE HERE
VERY LARGE CHRISTMAS SELECTION



MEYER'S BAKERY & CAFE

227 FRANKLIN AVENUE
NUTLEY, N.J. 667-8587

KIELB'S BAKERY
919 FRANKLIN AVENUE
NEWARK, N.J. 482-0585

MEYER'S BAKERY
382 WASHINGTON AVENUE
BELLEVILLE, N.J. 759-1673

COME IN AND BROWSE IN OUR
FANTASY LAND OF BAKED GOODS IN
ALL 3 LOCATIONS AND FILL YOUR
HOLIDAY NEEDS.



BLOCK BUSINESS SERVICES

A Division of H&R Block
WE PROVIDE FULL BOOKKEEPING SERVICES
ON A MONTHLY BASIS FOR SOLE
PROPRIETORS, CORPORATIONS &
PARTNERSHIPS. CALL FOR AN APPOINTMENT.

GWEN RADLOFF,
Account Representative
345 Clifton Avenue
Clifton, N.J. 07011
201-365-2469

HAPPY 1985



MILDRED'S HAIR FASHIONS

301 BLOOMFIELD AVE.
NUTLEY, N.J.
667-0065



BURGER KING

88 FRANKLIN AVENUE
NUTLEY, N.J.
235-9838

1985

**THOMAS BANKS
ASSOCIATES**
(FOOD FACILITIES PLANNING)
308 WASHINGTON AVENUE
NUTLEY, N.J.
661-2020



**DAVIS-TAYLOR
SHADE SHOP**
350 PASSAIC AVENUE
NUTLEY, N.J.
667-0491

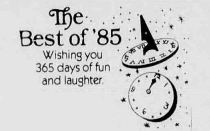


TROISE INSURANCE AGENCY
165 WASHINGTON AVE. BELLEVILLE, N.J.
759-4100 RITA G. TROISE



ERA PATRICIAN ASSOCIATES REAL ESTATE & TRAVEL

249 FRANKLIN AVENUE
NUTLEY
284-0900



DO IT BETTER Deanna's

V.I.P.
HAIR BOUTIQUE
DEE LA CONTI, Prop.

529 JORALEMON STREET
BELLEVILLE, N.J.
759-6633

USA AND BARBARA

Good Luck

A HAPPY & HEALTHY HOLIDAY
TO ALL FROM
THE NUTLEY RED CROSS

We are ready to serve you (with transportation, blood services, emergency services, service to military & their families.) Please support our Disaster Services/African Relief Campaign.
667-3818

NUTLEY SHOES

FORMERLY
THOM McAN

152 FRANKLIN AVENUE
NUTLEY, N.J.
667-2602



A Happy New Year to All

SEASON'S GREETINGS FROM
SELECTIVE
BUSINESS MACHINES

393 FRANKLIN AVENUE
NUTLEY, N.J. 235-1500
SALES • SERVICE • SUPPLIES

PRO LUMBER HARDWARE

585 Washington Ave
Belleville, N.J.
759-8900



ATLANTIC CHEMICAL CORP.
NUTLEY, N.J.

1985

BIANCOLA JEWELERS
507 FRANKLIN AVENUE
NUTLEY

JEWELRY-WATCH REPAIRING
DIAMONDS
SPECIAL ORDER WORK
667-3800



GREETINGS TO ALL

Happy
New
Year



McGRANE MORTGAGE CO.
254 KINGSLAND STREET
NUTLEY, N.J.
JOHN & BARBARA McCRANE
667-3331 - 667-7323

HAPPY HOLIDAYS

FROM:
CAMILLE MAAS — Realtor
Centre Realty CR
Realtor 667-5100
of Nutley 413 Centre St.
"Your Complete Real Estate Center!"



Nutley Park Shop Rite

SEASONS GREETINGS FROM

COSTANTINE REALTY

289 FRANKLIN AVENUE
NUTLEY, N.J.
667-7070

MICHAEL MARCIANO
PATRICIA CASIERO
ANGELA RUSSO

VINCENT NUZZO
PATRICIA HILDEBRANDT
SUSAN COSTANTINE

LOUIS COSTANTINE-BROKER



BLOOMFIELD CHIROPRACTIC CENTER
858 JO RALEMON ST. BELLEVILLE, N.J.
759-3600
DR. SUSAN M. GUARINO
DR. GERALD R. MATTIA



Best Wishes

SYLVIA L. IRWIN D.M.D., P.A.
SIDNEY ROGOFF D.D.S., P.A.
AND STAFF



BAG 'N BAGGAGE TRAVEL, INC.

1065 BROAD ST.
BLOOMFIELD, N.J.
338-6600

HAPPY NEW YEAR
BEST WISHES
TO ALL OUR LITTLE SCHOLARS, FAMILY & FRIENDS
THIS HOLIDAY SEASON AND IN THE COMING YEAR FROM

LITTLE SCHOLAR
444 Union Ave. Belleville
Ent. Little St.
PRESCHOOL & DAY CARE
Morning & Afternoon Sessions Available
Full Time Day Care
751-4050

BRONZE & GRANITE MEMORIALS, INC.
45 SAMWORTH ROAD,
CLIFTON, N.J.
201-473-3922



1985

Joyous New Year



DON'S FLOWER SHOP

266 WASHINGTON AVENUE
BELLEVILLE, N.J.
759-1686 759-0485



SEASONS' GREETINGS TO OUR FRIENDS!
FROM
ESSEX ORAL SURGERY ASSOCIATES
HERB KRASNER, PRESIDENT
364 FRANKLIN STREET, BLOOMFIELD, N.J.
748-1515

Joyous New Year

HOLIDAY GREETINGS FROM ALL OF US
AT RECORDS REALTY

Marion Peters: Realtor
Bob Peters
Rosemarie Hamilton
Lucille Martino
Anne Riccio
Joyce Kluwakowicz

Joe Lazar
Tom Peters
Marilyn Adamczyk
Dot Greengrove
Frank Haight

3 High Street, Nutley
667-5500
Open 7 days a week

Happy New Year
May it be
your time to shine!



PARK BARBERS
303 FRANKLIN AVENUE
NUTLEY, N.J.
235-9748

PEACE

Let this be the year it
all comes together
with brotherly love.

SEASONS GREETINGS FROM
CARL A. ORECHIO AGENCY

CARL A. ORECHIO
BRUCE CICCONE

May you toast in the
New Year with
love and laughter!



KERNER'S
122 WASHINGTON AVE.
BELLEVILLE, N.J.

1985
joy
health
happiness

HEALTH... HAPPINESS...
BEST WISHES
FOR A HAPPY HOLIDAY SEASON
To All Our Patrons, Friends & Family
From All Of Us At
BONADIES AGENCY & REALTOR
260 PARK AVENUE, NUTLEY
667-3534 Eves. 338-6661

1985
make it good!

SEASON'S GREETINGS FROM
LUCILLE & VALERIE
ELECTROLYSIS STUDIO - HAIR REMOVAL
572 BLOOMFIELD AVE. BLOOMFIELD, N.J.
748-6223

BOB CASSIE
Limousine Service
661-1329
Nutley, N.J.
WHITE BRIDAL
LIMOUSINE



NUTLEY GIFT SHOP

223 FRANKLIN AVENUE
NUTLEY, N.J.
667-1661

GREETINGS
I DO! I DO! BRIDAL BOUTIQUE
219 FRANKLIN AVENUE
NUTLEY, N.J.
667-5544 TONY DE VINGO

HAPPY NEW YEAR

SEASONS GREETINGS
TO THE PEOPLE OF NUTLEY
& OUR NEIGHBORING TOWNS
NUTLEY BAKE SHOP
90 Centre St.
Nutley

Joyous New Year

MICHAEL McLAFFERTY, GENERAL INSURANCE
443 PROSPECT ST., NUTLEY, N.J.
667-8534



STUDIO HAIRDRESSERS
120 FRANKLIN AVE. NUTLEY, N.J.
667-2110
PHYLLIS, PATTY, KAY, JOYCE & MICHAEL

1985

GRIFFITH SHADE CO.
308 WASHINGTON AVENUE
NUTLEY, N.J.
667-1474
VERTICAL & VENETIAN BLINDS
WINDOW SHADES



SEASONS GREETINGS & HAPPY HOLIDAYS
FROM YOUR FRIENDS AT
BOOK BUICK
66 WASHINGTON AVENUE
NUTLEY 667-0500
SALES-SERVICE-PARTS-USED CARS-
LEASING & DAILY RENTALS

GARDEN LIQUOR SHOP
156 GARDEN AVENUE
BELLEVILLE, N.J.
759-3661
WALT SMITH, INC.
FREE DELIVERIES



Welcome '85

**HAPPY HOLIDAYS FROM
CARL A. ORECHIO AGENCY
REAL ESTATE DIVISION**
47 WASHINGTON AVENUE
667-7733

ROSEMARIE CICCONE PAT D'ALESSANDRO
MARIO COCCIOLO GEORGE RIEPE
MARGARET CUNDAIR

AANENSEN'S

142 MIDLAND AVE.
KEARNY, N.J. 998-6892

The Aansenen family
would like to thank
our customers & friends
for their support this year.

We wish each of you a
Healthy & Happy New Year.



Peace and Hope



BLAIRS' GARDEN CENTER

652 CENTRE STREET
NUTLEY, N.J.
667-0991



May every avenue you travel bring you success!

NORTH JERSEY TRUCK SEAT CO.
526 FRANKLIN AVENUE, NUTLEY, N.J.
808 E. SCHWEIKERT
661-0717
661-0785 661-0786



KONDRECK STUDIOS

577 WASHINGTON AVE., BELLEVILLE, N.J.
759-2050

1985

Hope it brings you joy.

It is a pleasure to turn aside from everyday affairs & express to our friends, old & new, sincere appreciation for their friendship & confidence. May we convey warm season greetings & extend our best wishes for good health, happiness & prosperity in the coming year.

SHIRLEE & SOL SHERMAN
Teresa, Sally Rosine, Antoinette, Michelle, & Jean
SHERMAN'S BELLEVILLE & NUTLEY
155 Washington Ave. Belleville
217 Franklin Ave. Nutley



VAN DYK & CO., INC.
MAIN & WILLIAM STREETS
BELLEVILLE, N.J.
759-3225



THREE GUYS PIZZERIA
WE WISH TO ALL OUR CUSTOMERS

A VERY HAPPY NEW YEAR!
TAKE OUT ORDERS, WE DELIVER
366 Franklin Ave. Belleville
751-4580 751-4602

CLASSIFIED ADS sure to get results

In The Nutley Sun, Belleville Times and Bloomfield Life

667-3000 DEADLINE TUES. 12 NOON

CLASSIFIED ORDER FORM MAIL IT NOW

Minimum ad 15 words or less \$6.00
Each additional word 20¢ per word
1" ad approx. 25 words \$7.00 per inch

(Deadline Tuesday 12 noon)

Mail check or copy to:
THE NUTLEY SUN
BOX 281
NUTLEY, N.J. 07110

Also will go in 3 papers, The Nutley Sun,
The Belleville Times & The Bloomfield Life.

Name _____
Address _____
City _____ State _____ Zip _____
Phone _____ Amount Enclosed _____
Dates Desired _____
Classification _____
Copy _____

ANNOUNCEMENTS ANNOUNCEMENTS

MARY S. THEATER PARTIES

FOR GROUPS & INDIVIDUALS

Dec. 28 To Coge Ave. Folies
Dec. 30 To Coge Ave. Folies
Jan. 13 Atlantic City Trip
Jan. 20 - Lilly Langtry's Vocal
Jan. 27 - The Capades
Jan. 29 - To Coge Ave. Folies
April 11 - Liberate - Radio City
We have full insurance, limo, travel, food & tip 100%
4 WATERBURY SQUARE, NEW YORK TO ATLANTIC CITY
998-1268

CHRYSLER 260

BELLEVILLE
YELLOW CAR

OUT OF TOWN TAX
SERVICE - ANYWHERE
DEPENDABLE SERVICE
759-7000

THANK YOU LORD
WESLEY MEN STILL
SEEK THE LORD JESUS
CHRIST. AND IN HIM
ALONE WILL BE FOUND
FORGIVENESS INWARD
PEACE JOY AND LIFE
EVERLASTING CHRIST
SAYS BEHOLD I STAND
AT THE DOOR & KNOCK
IF ANY MAN HEARS MY
VOICE I WILL COME TO
HIM & WILL SUP WITH
HIM AND HE WITH ME
REVELATION 3:20 IN
THE BIBLE
G.M.

LIMOUSINES

By JOE BERARDINELLI

STRETCH LIMOUSINES
FOR ATLANTIC CITY
AND OTHER OCCASIONS
338-7672 with coupon

SEWING

WILL DO
HEMMING
MINOR
ALTERATIONS
& MISC. SEWING
CALL 235-0947

AUTOMOTIVE

1970 FORD ECONOLINE

EXCELLENT
CONDITION. MUST SELL
CALL 759-0107

1973 VOLKSWAGEN

SUPER BEETLE. AUTO
SHIFT. MINT COND. ASK-
ING \$1500. CALL 235-
9842 OR 751-6274

JUNK CARS WANTED

FREE TOW AWAY
SAME DAY PICK UP
T.O.S. TOWING, INC.
429-8471 Bloomfield
481-7610 Newark

ATTENTION! AUTO PARTS

BIRD'S

Will Pay \$60 For Any Junk

Car In Any Condition
WE PAY CASH

Highest Prices Paid For Late Models

USED CARS & TRUCKS
USED 991-4746 or 991-0081 USED
PARTS 54 Silver Ave., Kearny

374-8347

SIDE BY SIDE

CLEANING SERVICE
REASONABLE RATES
For appointment call
374-8347

221

AUTO SERVICE

*** FREE TOWING & ROAD TESTS ***

Kearns AUTOMATIC TRANSMISSIONS INC.

STANDARD & AUTOMATIC
4 WHEEL DRIVE TRUCKS & CARS

FREE ESTIMATES **998-9666**

(Across from North Arlington Diner)
20 RIVER ROAD, NORTH ARLINGTON

AUTO INSURANCE

743-5582

THOMAS DELANEY

Delson Associates

AUTO INSURANCE CENTER
CHECK OUR RATES

Immediate Coverage Minimum Down Payment

Mon-Friday 10 a.m. - 5 p.m. 7 p.m. - 8:30 p.m.
Saturday 10 a.m. - 3 p.m.

138 BLOOMFIELD AVE. BLOOMFIELD

AUTO WRECKERS

BILL'S AUTO WRECKERS

\$600 and up
FOR CARS OR TRUCKS
ANY CONDITION
Belleville Pike,
No. Arlington
998-9666

FRANK'S TOWING

24 Hour Service
Cars, Trucks, etc.
Highest Price Paid
Call 667-2192 or
344-6492

ALARM SYSTEMS

THEFT-GUARD SECURITY

SPECIALIZING IN
BURGLAR & FIRE
ALARMS

FREE ESTIMATES
FULLY INSURED
CALL 748-7111

ACCOUNTING & TAX

MASTER OF TAXATION

RETURNS PREPARED BY
APPOINTMENT
14 YEARS EXPERIENCE
MBA CERT. & TAX
COUN. 1976
SMALL BUSINESSES
MY SPECIALTY

ASBESTOS

ASBESTOS IN THE HOME

Becomes more dangerous
now than during summer.
Storm windows down, heat
leaked against cold, asbestos
fibers inspired in the air all
winter long, nowhere to go
except through the house.
Call Ted for free home

ALARM SYSTEMS

GARY'S SECURITY COMMUNICATIONS

CO. INC.

Installation on burglar alarms,
fire, intruder & paging
systems for home & business.
Call for free estimate, we'll
beat the competition's price.

CLEANING SERVICES

NORTH JERSEY MAINTENANCE

Complete Janitorial Service
Commercial & Residential
Comm. Window Cleaning
Mat Rentals
Car Wash
Carpet Cleaning
Office Maintenance
Reasonable Rates
MICHAEL CARONE
661-2146
QUALITY WORKSMANSHIP

DANIEL LOGAN

ROOM WAXING & RUG

CLEANING SERVICE

Rugs scrubbed and steam
retreated. Also upholstery clean-
ing.

CALL ANYTIME

Satisfaction Guaranteed

421

HOME IMPROVEMENTS

DRESSER CONTRACTING

PAINTING-PAPERHANGING-
WELDING-DRINK & TEXTURE
BUNGALOW TYPES CAR. 4.4
V.I. LOWMICA COUNTER TOPS
EXPERT WORKSMANSHIP
REASONABLE RATES
FREE ESTIMATES
NO JOB TOO BIG
OR TOO SMALL
739-5034 127-374-9076

SCIRICA CONSTRUCTION

General Contractor
No Job Too Small
Fully Insured
Call for MORE DETAILS
OUR FRIENDLY ARTISANS
WOULD BE HAPPY TO
HELP YOU
CALL 667-7000

For Free Estimates

Jerry Capone

General Contractor

Specializing

BATHROOMS

EXTENSIONS

PLUMBING

ROOFING

PANELING

CEILING

PAINTING

DIAPHERS

BASEMENTS

We sell and install our own

No middlemen

OVERHEAD GARAGE DOORS

Replaced & Installed

ELECTRIC DOOR OPENERS

Call for a free estimate

MODANIEL ENTERPRISES

667-4976

Call Home Improvements

ARNOLD LODATO

General Contractor

ROOFING & SIDING

Attics & Basement Finished

Document & Paneling

Bathrooms

Kitchens

Storm Windows & Doors

Replacement Windows

661-4830

Someone You Can Trust

For Additions, Alterations Or Repairs

Call for a free estimate

JOHN RICCI

ROOFING

SIDING

ADDITIONS

DOCKWORK

REMODELING

Call 759-3210

FULLY INSURED

BRING IT IN!

Top Grade Aluminum, Lead

Bathrooms, Kitchen, Steel

KEATY SCRAP METAL

ALUMINUM WASTE, INC.

TOP PRICES! 991-0432

BUYING ALUMINUM CANS

\$1.10 PER 100 LBS.

NO FURTHER METALS

ALUMINUM WASTE, INC.

61 MIDLAND AVE.

WARRINGTON, N.J.

473-7638

KITCHENS

Aannens's

Cabinetmakers

Creative Designs

of Kitchens & Baths

142 MIDLAND AVENUE

KEARNY

998-6882

COMPLETE HOME IMPROVEMENTS

BATHROOMS - KITCHENS

ATTICS - BASEMENTS

ROOFING - SIDING

CARPENTRY - PAINTING

ALL TYPES OF OTHER WORK

VERY REASONABLE

Free estimates call

751-9644

HOME IMPROVEMENTS

How Your Job Done Right

Alterations • Remodeling

Carpentry • Siding • Ceiling

Full Insured Free Estimates

Home Design

ASSOCIATES

759-0107 667-9484

CARPENTRY

Adams • Joynes

Kitchens • Basements

Paneling • Drop Ceilings

Full Insured Free Estimates

For A Free Price

Frank J. Scarsola, Inc.

GENERAL CONTRACTOR

ALL TYPES OF HOME IMPROVEMENTS AND REPAIRS

NO JOB TOO BIG

OR TOO SMALL

Call for a free estimate

759-3486

Satisfaction Guaranteed

HOME IMPROVEMENTS

CARPENTER/CABINETMAKER

TAKING ON SIDE JOBS

ALSO PAINTING

Free estimates

667-7725

ALL REPAIRS

Roofs, Gutters, Soffits, Leaders, Carpentry, Aluminum

replacement windows, fire and

storm damage and also com-

plete jobs. Belleville license

2717 Nutley license #1785

fully insured. Call Gerry

between 9AM & 5PM

484-7600

TONY NICOSIA & SONS

Complete Home Renovation

NEW ADDITIONS 1

1 Foot to 12 foot Conversion

SPECIALISTS IN

CUSTOM STOCK KITCHENS

Replacement Windows

751-7171 or 759-5874

CARPENTRY & LINOLEUM

REALLY RUGS

CARPENTRY & LINOLEUM

SALES

Specializing in Repairs

Free Estimates

Shop At Home Service

Call 759-1123

JIM LUONGO & SON

CONSTRUCTION

Also Siding

New Bathrooms

Modern Kitchens

Additions

Basements

Basement Remodeling

Free Estimates 661-3210

MONTECLAIR & NEW YORK

EXPRESS

MOVING & STORAGE

ONE OR TWO

TRUCKS

Very low rates

Call for a free estimate

Call 743-7393

JOHN & RAY

We do small jobs

226-7579

OR 226-7971

MASS MOVERS

661-2528

RESIDENTIAL MOVERS

SEVING

All Of New Jersey

LOCAL & LONG DISTANCE

MOVERS & STORAGE

PUC #9

PAUL'S MOVING & STORAGE

Local & Long Distance

Packing & Light Delivery

License #PMD0067

LOW RATES

675-6440

N. J. LOCAL MOVER

MOVE ANYTHING

OR FULL LOAD

OR FREE ESTIMATE

CALL 478-8685

WORK

CALL NICK 748-6379

Full Insured

FRANK RUMBO

Painting, Decorating

Painting, Decorating

Call for a free estimate

HELP WANTED

PARK MANOR, under new ownership, is expanding its staff and is seeking to fill the following full time positions.

- **BOOKKEEPER**
Accounts Payable, Accounts Receivable, Payroll exp. req.
- **HOUSEKEEPING SUPERVISOR**
Health care exp. req. 800-600-0000 in-jan. exp. req.
- **ADMISSIONS COORDINATOR/SECY**
Combines duties of arranging admissions to facility and general secretarial duties.
- **PATIENT ACTIVITIES COORDINATOR**
30 hr. accreditation by Dept. of Health or a Recreation Dept.
- **FOOD SERVICE SUPERVISOR**
Working supervisor with 90 hour certification req.

PARK MANOR NURSING HOME
23 Park Place, Bloomfield, N.J.

PART TIME
STATE CERTIFIED
X-RAY TECHNICIAN
MEDICAL OFFICE IN BELLEVILLE
MONDAY, TUESDAY,
THURSDAY & FRIDAY
1PM-5PM
DEPENDABLE
CALL 759-6950

DRIVER

Knowledge of N.Y.C.-N.J.-L.I. areas.
Office Services required when not driving.
Lateral company benefits.

Cal Personnel Dept. 997-3000

Equal Opportunity Employer M/F

RESUMES

COMPASS ASSOCIATES

CAREER COUNSELING

RESUME PREPARATION

CALL 429-7147
MONDAY THRU
SAT. 9 A.M.-5 P.M.

BUSINESS OPPORTUNITIES

LUNCHEONETTE LEASE

FOR SALE - TERMS

BEGGINS, PICKER

CORNERS LOCATION

404-0335 759-2686

INSTRUCTIONS

PIANO LESSONS

IN YOUR HOME

ALL STYLES-ALL LEVELS

BEGINNERS TO ADVANCED

CALL STEVE

667-7196

DRUM & PERCUSSION

LESSONS

GRADUATE & FORMER

INSTRUCTOR AT BERKLEE

COLLEGE OF MUSIC

BOSTON CONSERVATORY &

BOSTON'S PERCUSSION

CAREERS OFFERING LESSONS

IN THE AREA. FREE

CONSULTATION

CALL TONY RACCIATTI

667-4773

VOICE LESSONS

Voice teacher at NYC

university is accepting

new students.

Reasonable rates.

667-3572

CAKE DECORATING

Cakes made by hand

using the Wilton method

MICHAEL THE MASTER

CAKE MAGNAN

SCHOOL OF

CAKE DECORATING

667-7341 or 667-2788

NEED A

MATH TUTOR?

CALL 751-5150

ANYTIME

"YOUR AD COULD APPEAR HERE FOR AS LITTLE AS \$4.95 PER WEEK. FOR MORE DETAILS, CALL 667-7341 OR 667-2788."

REAL ESTATE

FOR RENT

APARTMENTS WANTED

ATTENTION LANDLORDS!

WE HAVE MANY QUALIFIED TENANTS THAT ARE

SCREENED AND WAITING FOR APARTMENTS OR

ROOMS. YOU CAN CHOOSE THAT SPECIAL TENANT AT

THE MOST TO YOU. FOR INFORMATION CALL TONY

GRANDE.

MARZULLI
264 Belleville Ave.
Bloomfield, N.J.

743-2306

REAL ESTATE

FOR SALE

HAPPY HOLIDAYS

AND BEST WISHES FOR THE

NEW YEAR FROM

GEORGE T. BOWES, REALTOR

WILLIAM BOWES

ANN MANGANO

BETTY MARTIN

SUE BERGER

JOHN GOODSON

12/27

SEASONS GREETINGS

Since 1917

EUGENE J.

Real Estate Insurance

759-1657

REAL ESTATE

FOR RENT

BLOOMFIELD

1 rms., vacant \$495 incl

heat & hot water.

1 bdrm. Cond. liv. rm with

balcony, din. rm, mod. b & b.

South. Avail. 11-85 \$425 incl

heat, hot water, appt. & car

2 bdrm garden apt. Avail. 1

1-85 \$75 incl apt. Avail. 1

1-85 \$425 incl heat & hot

water & appl.

TO INSPECT CALL

Arthur L. R. Galt, Realtor

GLENN W.

REAL ESTATE AGENCY

429-7380

JOS Broad St. Bloomfield

INSTRUCTIONS

PIANO LESSONS

IN YOUR HOME

ALL STYLES-ALL LEVELS

BEGINNERS TO ADVANCED

CALL STEVE

667-7196

DRUM & PERCUSSION

LESSONS

GRADUATE & FORMER

INSTRUCTOR AT BERKLEE

COLLEGE OF MUSIC

BOSTON CONSERVATORY &

BOSTON'S PERCUSSION

CAREERS OFFERING LESSONS

IN THE AREA. FREE

CONSULTATION

CALL TONY RACCIATTI

667-4773

VOICE LESSONS

Voice teacher at NYC

university is accepting

new students.

Reasonable rates.

667-3572

CAKE DECORATING

Cakes made by hand

using the Wilton method

MICHAEL THE MASTER

CAKE MAGNAN

SCHOOL OF

CAKE DECORATING

667-7341 or 667-2788

REAL ESTATE

FOR RENT

APARTMENTS WANTED

ATTENTION LANDLORDS!

WE HAVE MANY QUALIFIED TENANTS THAT ARE

SCREENED AND WAITING FOR APARTMENTS OR

ROOMS. YOU CAN CHOOSE THAT SPECIAL TENANT AT

THE MOST TO YOU. FOR INFORMATION CALL TONY

GRANDE.

MARZULLI
264 Belleville Ave.
Bloomfield, N.J.

743-2306

REAL ESTATE

FOR SALE

HAPPY HOLIDAYS

AND BEST WISHES FOR THE

NEW YEAR FROM

GEORGE T. BOWES, REALTOR

WILLIAM BOWES

ANN MANGANO

BETTY MARTIN

SUE BERGER

JOHN GOODSON

12/27

SEASONS GREETINGS

Since 1917

EUGENE J.

Real Estate Insurance

759-1657

REAL ESTATE

FOR RENT

BLOOMFIELD

1 rms., vacant \$495 incl

heat & hot water.

1 bdrm. Cond. liv. rm with

balcony, din. rm, mod. b & b.

South. Avail. 11-85 \$425 incl

heat, hot water, appt. & car

2 bdrm garden apt. Avail. 1

1-85 \$75 incl apt. Avail. 1

1-85 \$425 incl heat & hot

water & appl.

TO INSPECT CALL

Arthur L. R. Galt, Realtor

GLENN W.

REAL ESTATE AGENCY

429-7380

JOS Broad St. Bloomfield

INSTRUCTIONS

PIANO LESSONS

IN YOUR HOME

ALL STYLES-ALL LEVELS

BEGINNERS TO ADVANCED

CALL STEVE

667-7196

DRUM & PERCUSSION

LESSONS

GRADUATE & FORMER

INSTRUCTOR AT BERKLEE

COLLEGE OF MUSIC

BOSTON CONSERVATORY &

BOSTON'S PERCUSSION

CAREERS OFFERING LESSONS

IN THE AREA. FREE

CONSULTATION

CALL TONY RACCIATTI

667-4773

VOICE LESSONS

Voice teacher at NYC

university is accepting

new students.

Reasonable rates.

667-3572

CAKE DECORATING

Cakes made by hand

using the Wilton method

MICHAEL THE MASTER

CAKE MAGNAN

SCHOOL OF

CAKE DECORATING

667-7341 or 667-2788

REAL ESTATE

FOR RENT

APARTMENTS WANTED

ATTENTION LANDLORDS!

WE HAVE MANY QUALIFIED TENANTS THAT ARE

SCREENED AND WAITING FOR APARTMENTS OR

ROOMS. YOU CAN CHOOSE THAT SPECIAL TENANT AT

THE MOST TO YOU. FOR INFORMATION CALL TONY

GRANDE.

MARZULLI
264 Belleville Ave.
Bloomfield, N.J.

743-2306

REAL ESTATE

FOR SALE

HAPPY HOLIDAYS

AND BEST WISHES FOR THE

NEW YEAR FROM

GEORGE T. BOWES, REALTOR

WILLIAM BOWES

ANN MANGANO

BETTY MARTIN

SUE BERGER

JOHN GOODSON

12/27

SEASONS GREETINGS

Since 1917

EUGENE J.

Real Estate Insurance

759-1657

REAL ESTATE

FOR RENT

BLOOMFIELD

1 rms., vacant \$495 incl

heat & hot water.

1 bdrm. Cond. liv. rm with

balcony, din. rm, mod. b & b.

South. Avail. 11-85 \$425 incl

heat, hot water, appt. & car

2 bdrm garden apt. Avail. 1

1-85 \$75 incl apt. Avail. 1

1-85 \$425 incl heat & hot

water & appl.

TO INSPECT CALL

Arthur L. R. Galt, Realtor

GLENN W.

REAL ESTATE AGENCY

429-7380

JOS Broad St. Bloomfield

INSTRUCTIONS

PIANO LESSONS

IN YOUR HOME

ALL STYLES-ALL LEVELS

BEGINNERS TO ADVANCED

CALL STEVE

667-7196

DRUM & PERCUSSION

LESSONS

GRADUATE & FORMER

INSTRUCTOR AT BERKLEE

COLLEGE OF MUSIC

BOSTON CONSERVATORY &

BOSTON'S PERCUSSION

CAREERS OFFERING LESSONS

IN THE AREA. FREE

CONSULTATION

CALL TONY RACCIATTI

667-4773

VOICE LESSONS

Voice teacher at NYC

university is accepting

new students.

Reasonable rates.

667-3572

CAKE DECORATING

Cakes made by hand

using the Wilton method

MICHAEL THE MASTER

CAKE MAGNAN

REAL ESTATE REAL ESTATE REAL ESTATE REAL ESTATE REAL ESTATE REAL ESTATE REAL ESTATE REAL ESTATE REAL ESTATE

180 Centre St.
Nutley, N.J. 07110
667-3440

GEORGE E. MACMUNN C O.

REALTORS

100 Woodport Road
Sparta, N.J. 07871
729-8727



EXTRA! EXTRA! READ ALL ABOUT IT - NEW LISTING IN NUTLEY - Executive colonial featuring 18x16 family room w/cath. ceiling & brick flpl, mod kitchen with separate breakfast room and sliders to deck overlooking professionally landscaped yard, 3 lg. bedrooms, 1 1/2 baths, lovely rec. room and central air throughout.



SPACIOUS RANCH IN NUTLEY with 7 rooms on one floor + beautiful fam. room in basement, fireplace, central air & 2 baths, ASKING \$139,900. YOUR OFFER MAY TAKE IT!!

Complimentary Certificate of Property Value

Would you like to know the market value of your home?
"Across town or across the nation, we're ready to help you buy or sell"

Upon presentation of this certificate to GEO. E. MACMUNN REALTORS, a professional, comprehensive, market analysis of your property will be prepared at no cost or obligation to you. This service will assist you in determining the current market value of your real estate properties for estate planning, insurance updating, or possible resale.

NAME
ADDRESS
PHONE

Please disregard this offer if your property is currently listed with a real estate broker; it is not our intention to solicit the offerings of other real estate brokers.

Geo. E. MacMunn Co.
REALTORS

NUTLEY
180 Centre Street
667-3440

SPARTA
100 Woodport Road
729-8727

Look for this emblem



HAPPY 1985
Hope it slides
in with peace, love and joy!

TO ALL
OUR FRIENDS.
FROM

Wayne K. Thomas
REALTORS

277 Broad Street Bloomfield, New Jersey
(201) 429-7400

Each office independently owned and operated
MEMBER OF BLOOMFIELD GLEN RIDGE,
NUTLEY, BELLEVILLE BOARD OF REALTORS

GOLD MARKET ANALYSIS CERTIFICATE

Bearer is entitled to a Market Analysis of his/her residential property by a Century 21 Agent. Return this Certificate or call for an appointment.

Century 21
HOMES R US
544 Washington Ave.
Belleville, N.J.
751-8800

Put Number 1 to work for you.

SHERIFF'S SALE
SUPERIOR (CHANCERY) C-254
SUPERIOR COURT OF NEW JERSEY,
CHANCERY DIVISION, ESSEX COUNTY,
DOCKET NO. F-4946-81 THE HOWARD SAV-
INGS BANK, a corporation, PLAINTIFF vs.
MICHAEL MITNAUL, HIS WIFE, et al, DEFEN-
DANTS, Execution For Sale of Mortgaged
Premises.
By virtue of the above stated writ of Execu-
tion, to me directed, I shall expose for sale by
Public Auction, in SHERIFF'S OFFICE, Essex
County Courts Building in Newark, on Tues-
day, the 22nd day of January next, at one-
thirty P.M. (Prevailing Time).
The Property to be sold is located in the City
of Newark, County of Essex and State of New
Jersey.
Commonly known as: 185 Goldsmith
Avenue, Newark, New Jersey
Tax Lot No. 4 in Block No. 3699.
Dimensions of lot (Approximately) 40 feet
wide by 100 feet long.
Nearest Cross Street: Shuttle on the
Northeastern side of Goldsmith Avenue 120
feet from the Southeastern side of Maple
Avenue.
A complete description can be found in the
Essex County Register's Office.
The approximate amount of the Judgment to
be satisfied by said sale is the sum of FORTY
SIX THOUSAND NINE HUNDRED SIXTY TWO
DOLLARS AND SIXTY FOUR CENTS
(\$46,952.64), together with the costs of this
sale.
The Sheriff reserves the right to adjourn the
sale from time to time as provided by Law.
Newark, N.J. December 17, 1984
THOMAS J. D'ALESSIO, Sheriff
Levy & Ehrlich, Attorneys
The Belleville Times
Dec. 27, 1984
Jan. 3, 10, 17, 1985
Fee: \$82.72 No. 884-533

SHERIFF'S SALE
SUPERIOR (CHANCERY) C-242
SUPERIOR COURT OF NEW JERSEY,
CHANCERY DIVISION, ESSEX COUNTY,
DOCKET NO. F-4352-83 CITY FEDERATION
AND LOAN ASSOCIATION, a corp. of the U.S.A., PLAINTIFF vs. CHARLES LIGE
AND SANDRA LIGE, his wife, DEFENDANTS,
Execution For Sale of Mortgaged Premises.
By virtue of the above stated writ of Execu-
tion, to me directed, I shall expose for sale by
Public Auction, in SHERIFF'S OFFICE, Essex
County Courts Building in Newark, on Tues-
day, the 19th day of January next, at one-
thirty P.M. (Prevailing Time).
TOWNSHIP OF MONTCLAIR, COUNTY OF
ESSEX AND STATE OF NEW JERSEY, 418
WASHINGTON STREET, MONTCLAIR, NEW
JERSEY.
LOT 52, BLOCK 6, PIOT 57 ON TAX MAP
OF MONTCLAIR FIRST CROSSING STREET
WILLINGDALE AVENUE, 127.92 feet along
125.40 feet x 100.51 feet x 40 feet x 106.96
feet x 70 feet.
A complete description can be found in the
Essex County Register's Office.
The approximate amount of the Judgment to
be satisfied by said sale is the sum of FIFTY
ONE THOUSAND TWO HUNDRED TEN DOL-
LARS AND ONE CENT (\$51,210.01),
together with the costs of this sale.
The Sheriff reserves the right to adjourn the
sale from time to time as provided by Law.
Newark, N.J. December 10, 1984
THOMAS J. D'ALESSIO, Sheriff
Cahill, Wilms & Cahill, Attorneys
The Belleville Times
Dec. 20, 27, 1984
Jan. 3, 10, 1985
Fee: \$75.20 No. 884-525

SHERIFF'S SALE
SUPERIOR (CHANCERY) C-246
SUPERIOR COURT OF NEW JERSEY,
CHANCERY DIVISION, ESSEX COUNTY,
DOCKET NO. F-3276-84 MID STATES
MORTGAGE CORPORATION, PLAINTIFF vs.
CLEVELAND FLOWERS, et al, DEFENDANTS,
Execution For Sale of Mortgaged Premises.
By virtue of the above stated writ of Execu-
tion, to me directed, I shall expose for sale by
Public Auction, in SHERIFF'S OFFICE, Essex
County Courts Building in Newark, on Tues-
day, the 15th day of January next, at one-
thirty P.M. (Prevailing Time).
MUNICIPALITY, Township of Irvington
COUNTY AND STATE: ESSEX COUNTY STATE
OF NEW JERSEY.
STREET & STREET NO. 21 Ruth St.
TAX BLOCK & LOT: BLOCK 79, LOT 70
DIMENSIONS OF LOT: 100.00x31.68 x 10-
0.47 x 41.30
NEAREST CROSS STREET: 225.00 FEET
FROM Linden Ave.
A complete description can be found in the
Essex County Register's Office.
The approximate amount of the Judgment to
be satisfied by said sale is the sum of FORTY
FOUR THOUSAND NINE HUNDRED EIGHTY-
THREE DOLLARS FORTY AND ONE CENTS
(\$44,983.41), together with the costs of this
sale.
The Sheriff reserves the right to adjourn the
sale from time to time as provided by Law.
Newark, N.J. December 10, 1984
THOMAS J. D'ALESSIO, Sheriff
William M.E. Powers, Jr., Attorney
The Belleville Times
Dec. 20, 27, 1984
Jan. 3, 10, 1985
Fee: \$75.20 No. 884-509

SHERIFF'S SALE
SUPERIOR COURT OF NEW JERSEY,
CHANCERY DIVISION, ESSEX COUNTY,
DOCKET NO. F-4736-83 MAE KESLER, PLAIN-
TIF vs. TIMOTHY CRUMPLER, Single, and
MARY CRUMPLER, Unmarried, et al, DEFEN-
DANTS, Execution For Sale of Mortgaged
Premises.
By virtue of the above stated writ of Execu-
tion, to me directed, I shall expose for sale by
Public Auction, in SHERIFF'S OFFICE, Essex
County Courts Building in Newark, on Tues-
day, the 22nd day of January next, at one-
thirty P.M. (Prevailing Time) all of the land
located in the City of Newark, County of Essex
and State of New Jersey, specifically
described as follows:
BEGINNING in the southerly line of Vassar
Avenue at a point therein distant thirty-nine
feet and thirty-seven one-hundredths of a foot
easterly from the southerly corner of Vassar
Avenue and Maple Place; thence (1) South
forty-four degrees, nineteen and one-half
minutes east forty feet; thence (2) south forty
two degrees and one-half minute West one
hundred feet; thence (3) north forty-two
degrees, nineteen and one-half minutes west
forty feet; thence (4) north forty-two degrees
thirty and one-half minutes East one hundred
feet to the place of BEGINNING.
BEING COMMONLY KNOWN AS 162 Vassar
Avenue, Newark, New Jersey.
BEING also known as Lot No. 10, Block No.
3701 on the Tax Map of the City of Newark.
As subject to rights in favor of Newark
Telephone Co. and Public Service Electric Co.
as set forth in agreement recorded in Book M,
48, page 438 of Deeds in the Office of the
Register of Essex County, to stationery and
multiple requirements relating to land and
buildings.
It is intended to describe the same premises
set forth in a Deed made by Marvin Bailey and
Linda Bailey, his wife, to Timothy Crumpler,
Single, and Mary Crumpler, Unmarried, dated
May 12, 1982 and recorded with the
Register's Office of Essex County on May 14,
1982 in Book 4750 of Deeds for said County,
at Page 377 et seq.
The approximate amount of the Judgment to
be satisfied by said sale is the sum of
ELEVEN THOUSAND FOUR HUNDRED THIRTY
ONE DOLLARS AND THIRTY FIVE CENTS
(\$11,431.35), together with the costs of this
sale.
The Sheriff reserves the right to adjourn the
sale from time to time as provided by Law.
Newark, N.J. December 17, 1984
THOMAS J. D'ALESSIO, Sheriff
Stern & Weiss, Attorneys
The Belleville Times
Dec. 27, 1984
Jan. 3, 10, 17, 1985
Fee: \$120.32 No. 884-532

NOTICE OF DESIGN
PLANNING BOARD OF THE
TOWNSHIP OF BELLEVILLE
TO WHOM IT MAY CONCERN:
PUBLIC NOTICE is hereby given to all
persons that a public hearing was held on
December 13, 1984, at which hearing applica-
tion for a conditional use and variance to
vary a Speedy Muffler King Shop on Block
133, lots 26 and 28, commonly known as 1342
Washington Avenue, Belleville, New Jersey,
was heard.
Said application was granted with condi-
tions, which decision is on file and available
for inspection in the Planning Building, 383
Washington Avenue, Belleville, New Jersey.
AMATO, SALERNO & LUNGA, P.A.

SHERIFF'S SALE
SUPERIOR (CHANCERY) C-220
SUPERIOR COURT OF NEW JERSEY,
CHANCERY DIVISION, ESSEX COUNTY,
DOCKET NO. F-11775-84 LOWMEY & NET-
TELSON COMPANY, PLAINTIFF vs. MABEL J.
BROWN, et al DEFENDANTS, Execution For
Sale of Mortgaged Premises.
By virtue of the above stated writ of Execu-
tion, to me directed, I shall expose for sale by
Public Auction, in SHERIFF'S OFFICE, Essex
County Courts Building in Newark, on Tues-
day, the 8th day of January next, at one-thirty
P.M. (Prevailing Time).
Municipality: City of Newark, County of Es-
sex.

Township People Voice Resolutions

(Continued from page one)



Virginia Schenke
Oak Street
"I usually don't make
New Year's resolutions
because they're too dif-
ficult to keep. I'd have to
give it some thought."

Gail Cook
Division Avenue
"Not to spend so much
money."

Marquee Lounge & Restaurant

Gala New Year's Eve Party
Hot & Cold Buffet starting at 9 p.m.
Champagne Toast 12 p.m.
Continental Breakfast 2 a.m.
Open Bar 9 p.m. to 3 a.m.
Favors & Noisemakers
Entertainment
Fabulous Horizon Band
plus New York comedian Shorty Cross
& Flo singing your favorite songs
Tickets \$30⁰⁰ per person
Corner of Willow & Orange Street
Bloomfield - 3 blks off Garden State Exit 148
R.S.V.P. 429-1895 - 429-1949

Attorneys for the Applicant,
Speedy Muffler King
The Belleville Times
Dec. 27, 1984
Fee: 884-534
No. 884-532

Street address: 37 Schley Street, Newark, N.J.
Tax Lot and Block: Lot 43, Block 3083 on the Tax Map
Approximate dimensions: 25 feet x 100 feet
Nearest cross street: Wye Avenue 186.08
A full legal description can be found in the
Office of the Register of Essex County, in
mortgage book 4297, page 377.
The approximate amount of the Judgment to
be satisfied by said sale is the sum of FOUR-
TEEN THOUSAND FOUR HUNDRED AND
EIGHTY DOLLARS AND SEVENTY-SIX CENTS
(\$14,480.76), together with the costs of this
sale.
The Sheriff reserves the right to adjourn the
sale from time to time as provided by Law.
Newark, N.J. December 3, 1984
THOMAS J. D'ALESSIO, Sheriff
Alvin D. Miller, Attorney
The Belleville Times
Dec. 13, 20, 27, 1984
Jan. 3, 1985
Fee: \$71.44 No. 884-510

ShopRite's Holiday Party Guide

HAPPY NEW YEAR

Check Your Local ShopRite for Holiday Store Hours.



Gourmet Cheese That's Sure To Please!



Simply Scrumptious Shrimp!

Shrimp...served on chilled ice with a tasty sauce, or as finger food with a spicy dip...is perfect for holiday entertaining. And here at ShopRite you'll choose from the most delectable assortment in town!



Party Platters... The Crowd Pleasers.

Party Platters from The Appy Place add a delicious dimension to any holiday gathering. Skilled Party Planners will prepare scrumptious party trays that are sure crowd pleasers. Let ShopRite do the work, while you relax and enjoy the festivities.

Subtle French Brie...creamy Jarlsberg...or smooth Danish Havarti are just a few of the delights in our fabulous collection of Gourmet Cheeses. Delight your guests with great tastes and textures from The Cheese Place, and make every holiday party something very special.

Make Sure There Are Plenty of Sodas and Mixers on Hand!



PLUS DEP. WHERE REQUIRED

Vintage Cola

2-ltr. btl. **\$1.00**

ALL VAR. (PLUS DEP. WHERE REQ.)

ShopRite Mixers **3.10**

PLUS DEP. WHERE REQ.

C&C Seltzer **3.10**

ALL VAR. REG. DIET OR SOMETIM LITE

ShopRite Soda **2.69**

REG. DIET OR FREE, PLUS DEP. WHERE REQ.

C&C Cola **1.99**

PLUS DEP. WHERE REQ.

3-Liter Coke **1.49**

The Grocery Place

RED Hawaiian Punch
1/2-gal. btl. **.99**

GROUND COFFEE

Chock Full O'Nuts **1.99**

ALL VARIETIES

Planters Snacks **.99**

LIPSON

Onion Soup Mix **.79**

SOLID PACK, IN OIL OR WATER

Star-Kist White Tuna **.99**

The Appy Place

CAMECO Imported Cooked Ham **1.99**
CARANDO OR HORMEL
Stick Pepperoni **2.89**

The Frozen Food Place

ALL VARIETIES
Red 'L Hors D'Oeuvres **1.59**

ShopRite ASSORTED FLAVORS

All Natural Ice Cream **1.99**

Fresh Bake Shoppe

12-OZ. TOTAL WEIGHT
Egg Twist Dinner Rolls **6.89**
in pkg.

22-OZ. TOTAL WEIGHT

Hard Rolls **12.19**

ShopRite Coupon (251)
WITH THIS COUPON ECR
TWO (2) 1-LTR. BTL. REGULAR SPRITE OR ALL VARS.
Seagram's Mixers
2.99
FOR
COUPON GOOD AT ANY SHOPRITE MARKET. LIMIT ONE PER FAMILY.
EFFECTIVE WED. DEC. 26 THRU SAT. DEC. 29, 1984.
SAVE .19

Imported French Brie

DELICIOUS
lb. **2.79** WITH HERBS **3.99**

IMPORTED

French Port Salut **3.99**

DELICIOUS

Nibbles Cheese Spread **3.99**

IMPORTED

Feta Cheese **2.99**

Paper Goods!

ShopRite **Foam Plates** **.99**
50-ct. pkg.

WHY PAY MORE?™

Foam Cups **.59**

ASSORTED OR WHITE

ShopRite Napkins **.89**

The MEATING® Place

ShopRite REG. OR NO SALT
Bits Crackers **.69**
STACK PACK
12-oz. box

ShopRite REG. OR NO SALT

Barrel Peanuts **2.99**

FISHER

Honey Roasted Peanuts **1.99**

SMALL EXTRA LARGE OR JUMBO

Lindsay Pitted Olives **.99**

ShopRite "BUCKET" STUFFED

Manzanilla Olives **.79**

The Produce Place

PERFECT FOR SNACKING, SWEET
Red Emperor Grapes **.79**
lb.

CALIFORNIA

Fresh Broccoli **.89**

LARGE 40 FLORIDA WHITE

Seedless Grapefruit **4.99**

The Dairy Place

WHOLE MILK OR PART SKIM
ShopRite Ricotta **2.99**
3-lb. cont.

ShopRite

Cream Cheese **.69**

WHOLE MILK OR PART SKIM

ShopRite Mozzarella **1.99**

QUARTERS

ShopRite Margarine **2.99**

ShopRite Coupon (258)
WITH THIS COUPON ECR
.25 OFF
TOWARD THE PURCHASE OF A
12-OZ. PKG. IMPERIAL STYLE
Monsoon Seafood Chunks
COUPON GOOD AT ANY SHOPRITE MARKET. LIMIT ONE PER FAMILY.
EFFECTIVE WED. DEC. 26 THRU SAT. DEC. 29, 1984.
SAVE .25

French Supreme

IMPORTED 63% BRIE
lb. **3.99**

IMPORTED GRATED

Pecorino Romano **3.99**

DOMESTIC

Aurichio Provolone **4.99**

DOMESTIC WINE

Cheddar Cheese **2.99**

Chips & Snacks!

ShopRite REG. OR KRINKLE
Potato Chips **1.39**
16-oz. bag

CHEDDAR CHEESE, NACHO OR PIZZA FLAVORED

Combos Filled Snacks **.99**

ASSORTED VARIETIES

ShopRite Pretzels **.79**

The MEATING® Place

FULL CUT
Fresh Ham Roast **1.29**
SHANK HALF BUTT HALF **1.39**

DELICIOUS FRESH

Boneless Ham Roast **2.29**

SMOKED, WATER ADDED

Shank Portion Ham **.99**

SMOKED, WATER ADDED

Butt Portion Ham **1.19**

SMOKED, WATER ADDED

Shank Half Ham **1.19**

EXTRA LARGE
Slicing Tomatoes **.49**
lb.

FRESH CRISP CALIFORNIA

Pascal Celery **.69**

U.S. #1 GRADE

Yellow Onions **.79**

The Deli Place

WILSON CORN KING OR
John Morrell Canned Ham **7.99**
5-lb. can

POLISH

Imported Canned Ham **7.99**

WHY PAY MORE?™

Armour Canned Ham **5.99**

HERBUD

Sliced Bacon **1.49**

ShopRite Coupon (252)
WITH THIS COUPON ECR
ONE (1) 134-CT. BOX ASSORTED PRINTS
Vanity Fair Facial Tissues
.59
COUPON GOOD AT ANY SHOPRITE MARKET. LIMIT ONE PER FAMILY.
EFFECTIVE WED. DEC. 26 THRU SAT. DEC. 29, 1984.
SAVE .10

Small Shrimp

SAVE AN ADDITIONAL **2.50** WHEN YOU BUY ANY 5 LB. BOX ANY SIZE
FROZEN & THAWED
lb. **3.99**

FROZEN & THAWED

Medium Shrimp **4.99**

41-50 PER LB. lb.

FROZEN & THAWED

Large Shrimp **6.49**

31-35 PER LB. lb.

FROZEN & THAWED

Jumbo Shrimp **7.99**

21-25 PER LB. lb.

FROZEN & THAWED

Extra Colossal Shrimp **12.99**

UNDER 7 PER LB. lb.

The Bakery Place

LIPARI'S HOT OR SWEET PORK
Italian Style Sausage **1.27**
ANY 5 1/2 LBS. PKG.

BEEF TOP ROUND

London Broil **2.27**

HOLLY FARMS, 6 LB. AVG.

Fresh Roaster **.67**

FROZEN GRADE A (10 TO 12 LB. AVG. LB. .99)

ShopRite Turkeys **.89**

ShopRite GRADE A (10 TO 12 LB. AVG. LB. 1.09)

Fresh Turkeys **.99**

18 TO 22 LB. AVG. LB.

18 TO 22 LB. AVG. LB.

18 TO 22 LB. AVG. LB.

18 TO 22 LB. AVG. LB.

18 TO 22 LB. AVG. LB.

18 TO 22 LB. AVG. LB.

18 TO 22 LB. AVG. LB.

18 TO 22 LB. AVG. LB.

18 TO 22 LB. AVG. LB.

18 TO 22 LB. AVG. LB.

18 TO 22 LB. AVG. LB.

18 TO 22 LB. AVG. LB.

18 TO 22 LB. AVG. LB.

18 TO 22 LB. AVG. LB.

18 TO 22 LB. AVG. LB.

18 TO 22 LB. AVG. LB.

18 TO 22 LB. AVG. LB.

18 TO 22 LB. AVG. LB.

18 TO 22 LB. AVG. LB.

18 TO 22 LB. AVG. LB.

18 TO 22 LB. AVG. LB.

18 TO 22 LB. AVG. LB.

18 TO 22 LB. AVG. LB.

18 TO 22 LB. AVG. LB.

18 TO 22 LB. AVG. LB.

18 TO 22 LB. AVG. LB.

18 TO 22 LB. AVG. LB.

18 TO 22 LB. AVG. LB.

18 TO 22 LB. AVG. LB.

18 TO 22 LB. AVG. LB.

18 TO 22 LB. AVG. LB.

18 TO 22 LB. AVG. LB.

18 TO 22 LB. AVG. LB.

18 TO 22 LB. AVG. LB.

18 TO 22 LB. AVG. LB.

18 TO 22 LB. AVG. LB.

18 TO 22 LB. AVG. LB.

18 TO 22 LB. AVG. LB.

18 TO 22 LB. AVG. LB.

18 TO 22 LB. AVG. LB.

18 TO 22 LB. AVG. LB.

18 TO 22 LB. AVG. LB.

18 TO 22 LB. AVG. LB.

18 TO 22 LB. AVG. LB.

18 TO 22 LB. AVG. LB.

18 TO 22 LB. AVG. LB.

18 TO 22 LB. AVG. LB.

18 TO 22 LB. AVG. LB.

18 TO 22 LB. AVG. LB.

18 TO 22 LB. AVG. LB.

18 TO 22 LB. AVG. LB.

18 TO 22 LB. AVG. LB.

18 TO 22 LB. AVG. LB.

See The High Quality Our Low Prices Can Buy!

In order to assure a sufficient supply of sales items for all our customers, we must reserve the right to limit the purchase to units of 4 of any sales items, except where otherwise noted. Not responsible for typographical errors. Prices effective Wed., Dec. 26 thru Sat., Dec. 29, 1984. None sold to other retailers or wholesalers. Artwork does not necessarily represent item on sale. It is for display purposes only. Copyright WAKEFORD FOOD CORPORATION 1984.